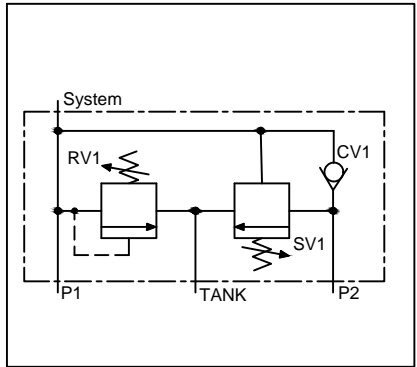
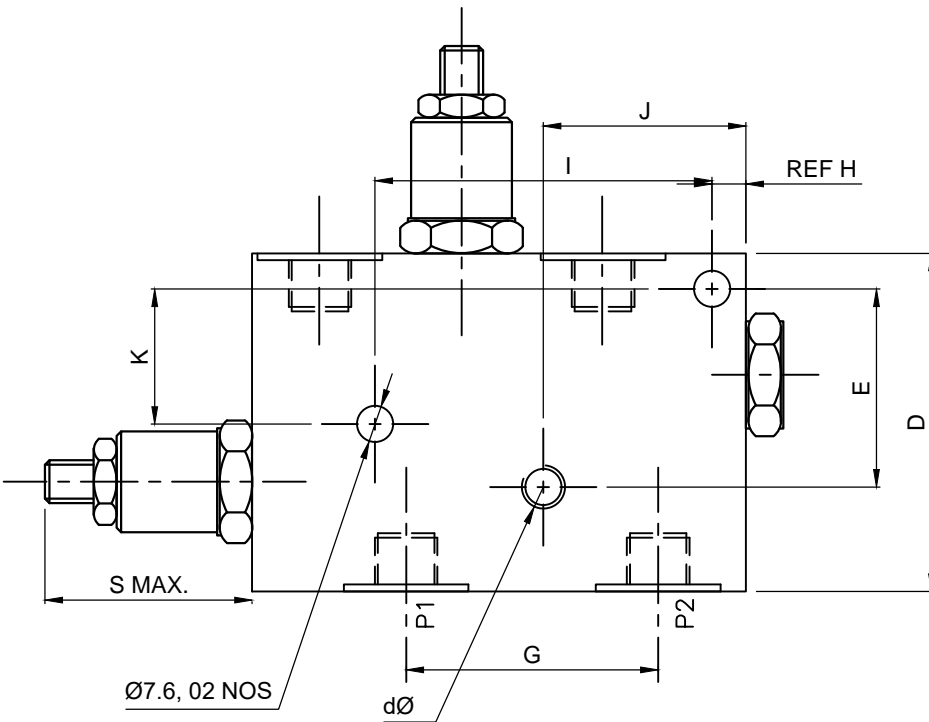
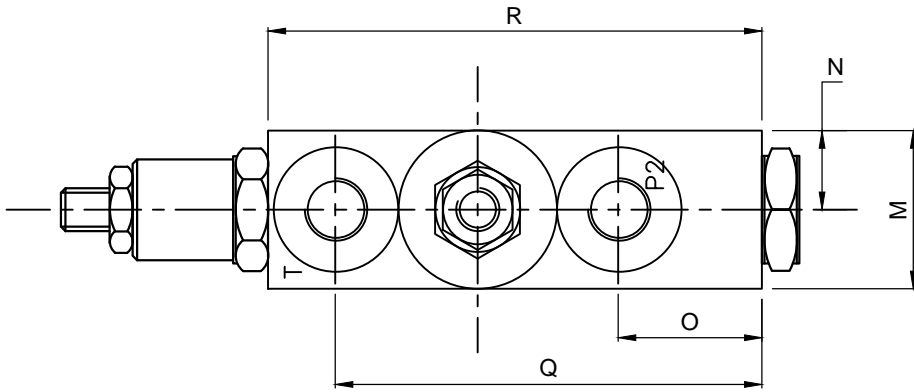




Hi-Lo UNLOADING VALVE

Hi-Lo -01-IL-YY-ZZ



Specifications

Maximum Flow	57 LPM
Maximum Setting Pressure	245 Bar
HDI Cartridge used	RDD 03

General Description

The Hi-Lo Unloading Valves are typically needed for double pump Hi-Lo circuits. The horse power requirement in system is considerably reduced due to the unloading of large pump flow to tank at low pressure when high pressure is developed by smaller pump with lower flow.

XX	Press.Range(Bar) (Relief valve)
07	5- 70
15	5 - 140
25	5 - 245

XX	Press.Range(Bar) (Sequence valve)
07	5- 70
15	5 - 140
25	5 - 210

SIZE ZZ	P1	P2	T	SY	GU	D	E	F	G	H	I	J	K	dØ	M	N	O	Q	R	S
03	3/8" BSP	3/8" BSP	3/8" BSP	1/2" BSP	1/4" BSP	76	48	19	81	9	83	51	33	7.6	32	16	41	106	127	85