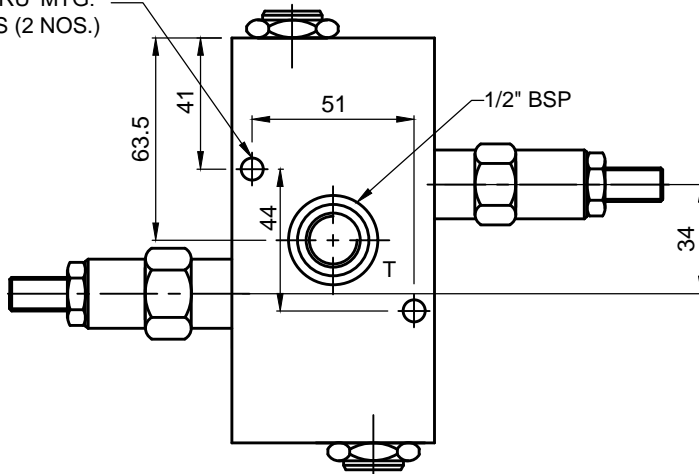
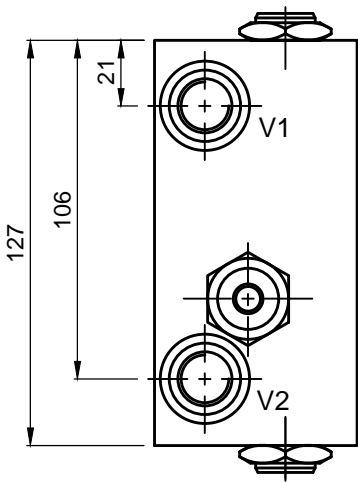


TOP VIEW

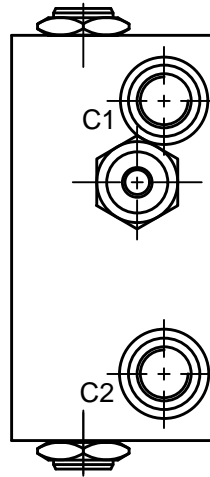
Ø7 THRU' MTG. HOLES (2 NOS.)



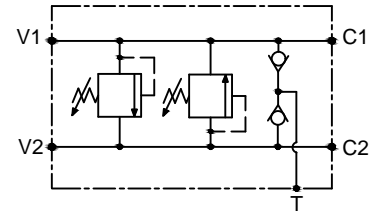
FRONT VIEW



L.H.SIDE VIEW



R.H.SIDE VIEW



Specifications

|                          |                     |
|--------------------------|---------------------|
| Maximum Flow             | 40 LPM              |
| Maximum Setting Pressure | 245 Bar             |
| Reseat Pressure          | 75% of set pressure |
| HDI Cartridge            | RDD 02              |

General Description

The XRDD 02-MUC Series, Dual Cross Over Relief Valves With Make Up Checks consist of two direct acting poppet style cartridge relief valves with anti-cavitation checks. These valve provides both overload and shock protection for double acting hydraulic actuators as well as protection from cavitating the Motor, Or Actuators.

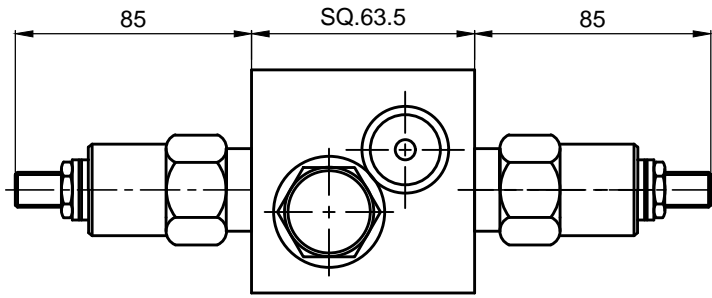
| YY | Press.Range(Bar) |
|----|------------------|
| 10 | 10 - 105         |
| 20 | 20-170           |
| 30 | 30 - 245         |

| ZZ | PORTS (V1,V2&C1,C2) |
|----|---------------------|
| 38 | 3/8" BSP (STD.)     |
| 12 | 1/2" BSP            |

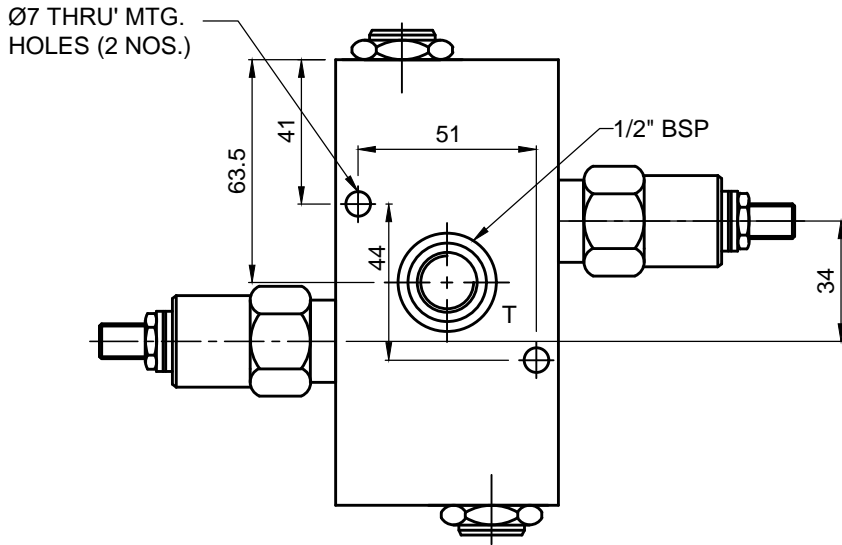


DUAL CROSS OVER RELIEF VALVES, WITH MAKE UP CHECKS

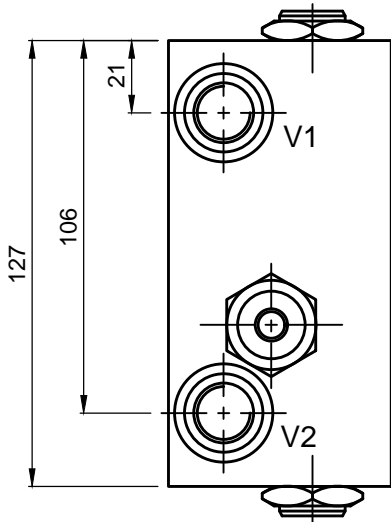
XRDD 03-MUC-IL-YY-ZZ



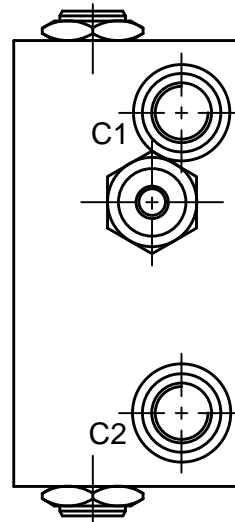
TOP VIEW



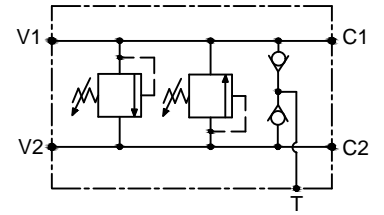
FRONT VIEW



L.H. SIDE VIEW



R.H. SIDE VIEW



Specifications

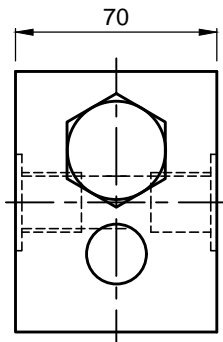
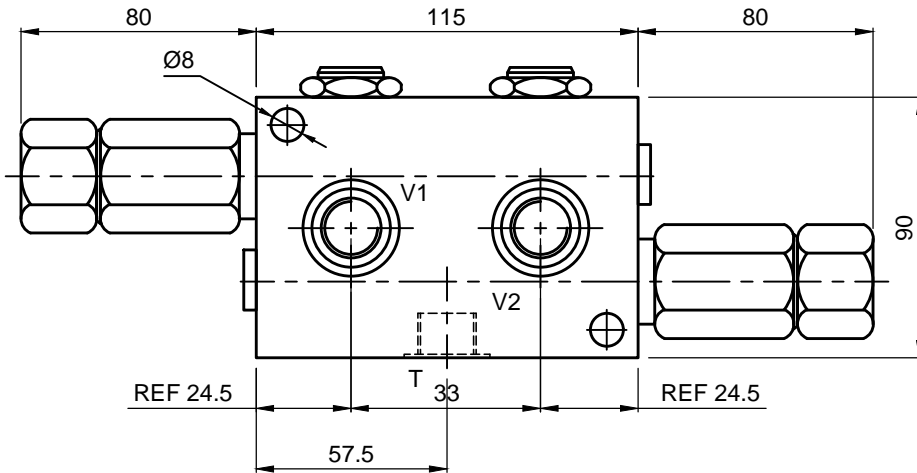
|                          |                     |
|--------------------------|---------------------|
| Maximum Flow             | 80 LPM              |
| Maximum Setting Pressure | 245 Bar             |
| Reseat Pressure          | 75% of set pressure |
| HDI Cartridge            | RDD 03              |

General Description

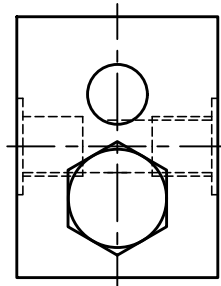
The XRDD 02-MUC Series, Dual Cross Over Relief Valves With Make Up Checks consist of two direct acting poppet style cartridge relief valves with anti-cavitation checks. These valve provides both overload and shock protection for double acting hydraulic actuators as well as protection from cavitating the Motor, Or Actuators.

| YY | Press.Range(Bar) |
|----|------------------|
| 10 | 10 - 105         |
| 20 | 20-170           |
| 30 | 30 - 245         |

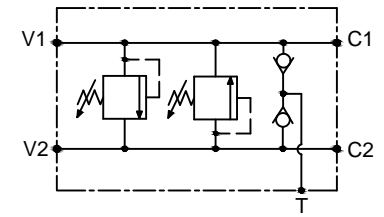
| ZZ | PORTS (V1,V2&C1,C2) |
|----|---------------------|
| 12 | 1/2" BSP            |
| 34 | 3/4" BSP            |



L.H.SIDE VIEW



R.H.SIDE VIEW



Specifications

|                          |                     |
|--------------------------|---------------------|
| Maximum Flow             | 150 LPM             |
| Maximum Setting Pressure | 245 Bar             |
| Reseat Pressure          | 85% of set pressure |
| HDI Cartridge            | RDD 04              |

General Description

The XRDD 02-MUC Series, Dual Cross Over Relief Valves With Make Up Checks consist of two direct acting poppet style cartridge relief valves with anti-cavitation checks. These valve provides both overload and shock protection for double acting hydraulic actuators as well as protection from cavitating the Motor, Or Actuators.

| YY | Press.Range(Bar) |
|----|------------------|
| 10 | 10 - 105         |
| 20 | 20-170           |
| 30 | 30 - 245         |

| ZZ | PORTS (V1,V2&C1,C2) |
|----|---------------------|
| 34 | 3/4" BSP (STD.)     |
| 10 | 1" BSP              |