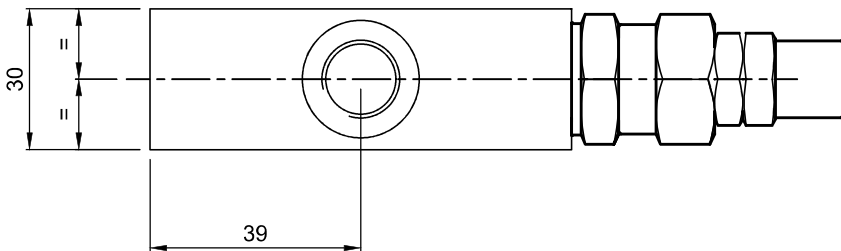
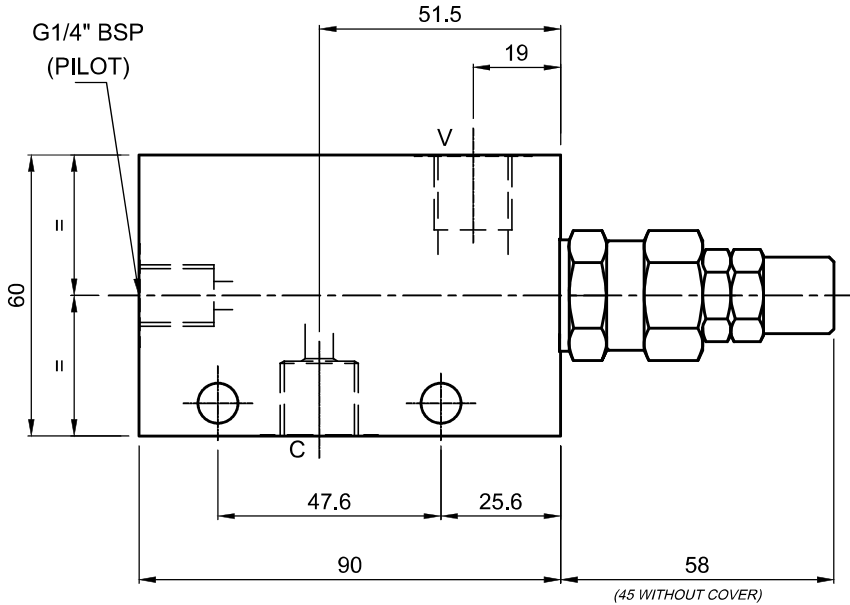


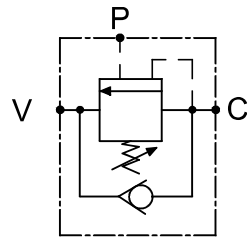


SINGLE OVER CENTER VALVE

SOCV 02-IL-YY-ZZ



Cartridge With Body



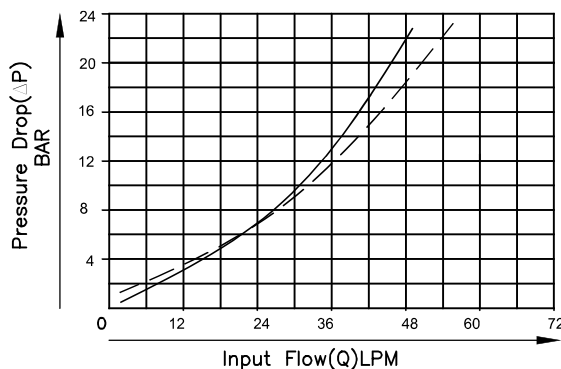
Specifications

Maximum Flow	40 LPM
Maximum Setting Pressure	350 Bar
Cavity	--

General Description

The SOCV Series, Single Over Center Valves is designed to decelerate the loads and to prevent loads from running ahead of pump. The valve consists of differential style relief valve, a pilot system and a check valve. Useful for restricting the holding pressure in systems encountering dynamic loads.

Performance Curve



V — C
V — C

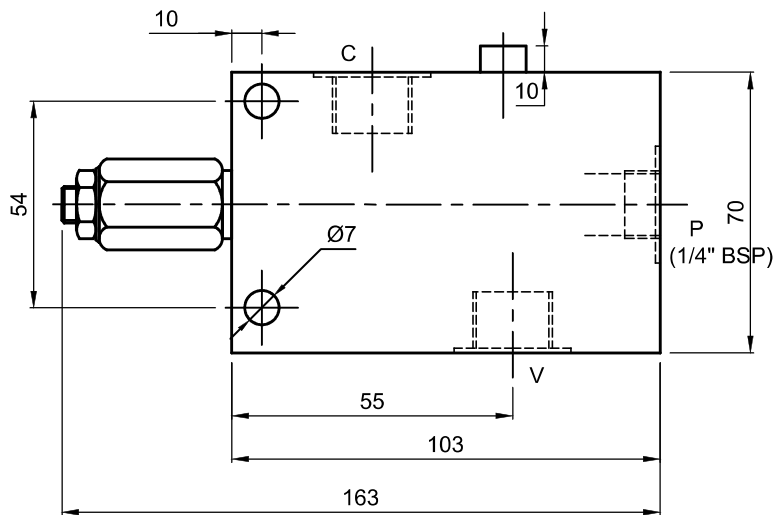
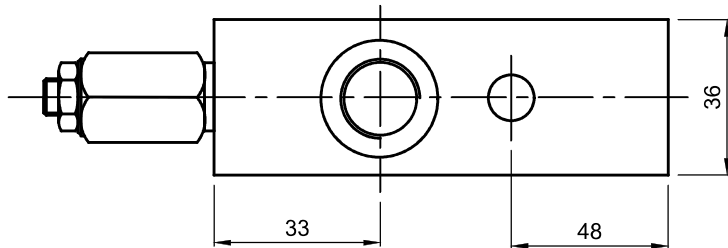
YY	Pilot Ratio
14	1 : 4.25

ZZ	PORTS (V & C)
38	3/8" BSP(STD.)
12	1/2" BSP

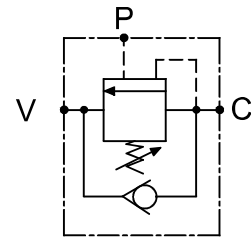


SINGLE OVER CENTER VALVE

SOCV 03-IL-YY-ZZ



Cartridge With Body



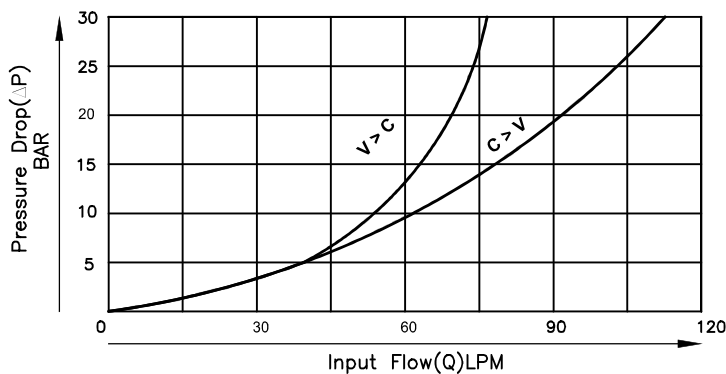
Specifications

Maximum Flow	80 LPM
Maximum Setting Pressure	350 Bar
Cavity	--

General Description

The SOCV Series, Single Over Center Valves is designed to decelerate the loads and to prevent loads from running ahead of pump. The valve consists of differential style relief valve, a pilot system and a check valve. Useful for restricting the holding pressure in systems encountering dynamic loads.

Performance Curve



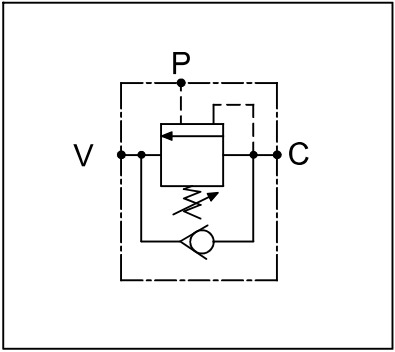
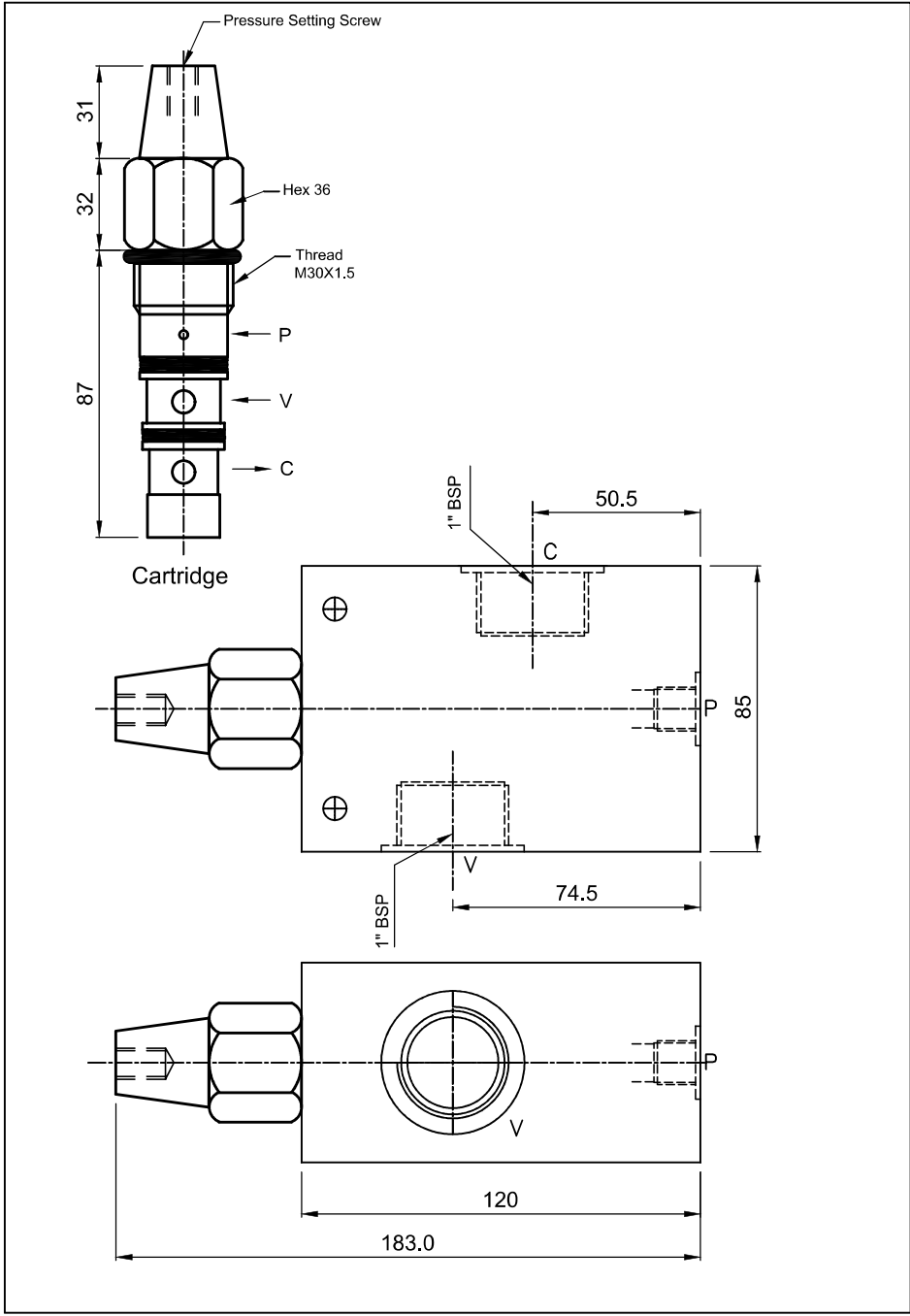
YY	Pilot Ratio
16	1:6

ZZ	PORTS (V & C)
12	1/2" BSP(STD.)



SINGLE OVER CENTER VALVE

SOCV- 04-XX-YY-ZZ



Specifications

Maximum Flow	160 LPM
Maximum Setting Pressure	350 Bar
Cavity	LCC-M30

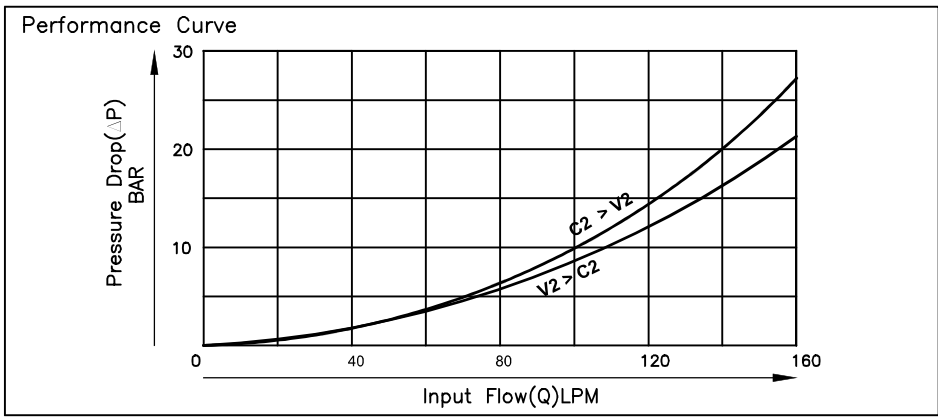
General Description

The SOCV Series, Single Over Center Valve has direct acting differential area poppet type relief valve with externally operated pilot piston and reverse free flow check valve design. The relief valve is normally set, at least 30% above maximum load induced pressure. The valve is best suited to control moving loads and to prevent them from running ahead of supply flow. When supply pressure is not applied the load is locked. But any surge pressure caused by load overrun or an external force will open the relief valve thus protecting the hydraulic actuator.

XX	MOUNTING STYLE
00	CARTRIDGE ONLY
IL	INLINE

YY	Pilot Ratio
18	1:8
14	1:4

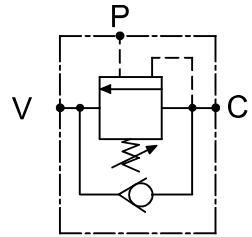
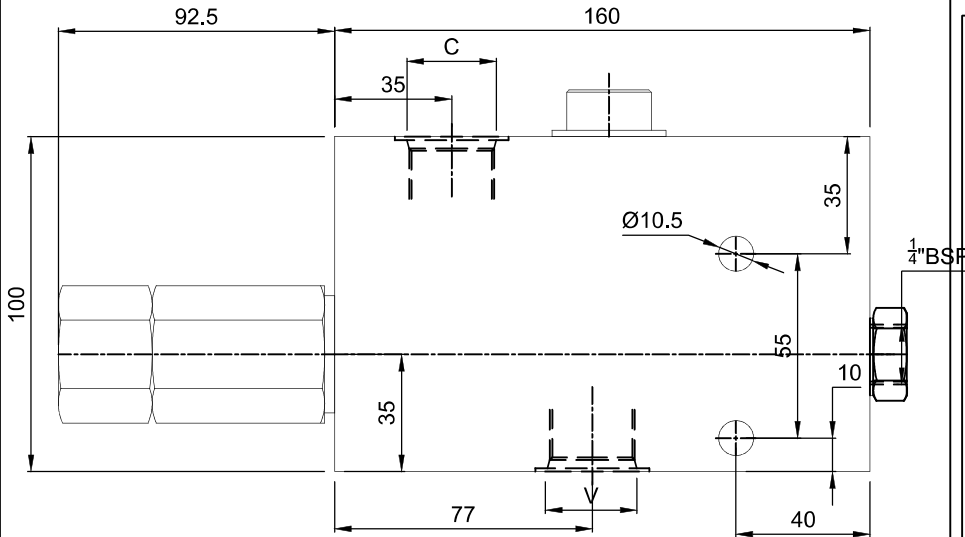
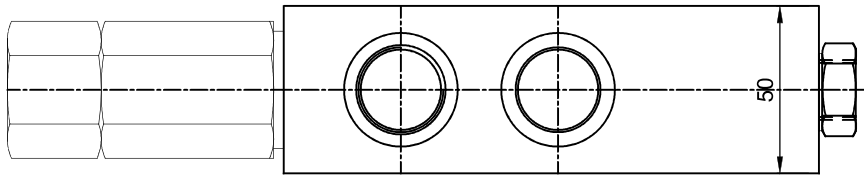
ZZ	PORTS (V & C)
10	1" BSP (STD.)





SINGLE OVER CENTER VALVE

SOCV- 05-XX-YY-ZZ



Specifications

Maximum Flow	220 LPM
Maximum Setting Pressure	350 Bar
Cavity	--

General Description

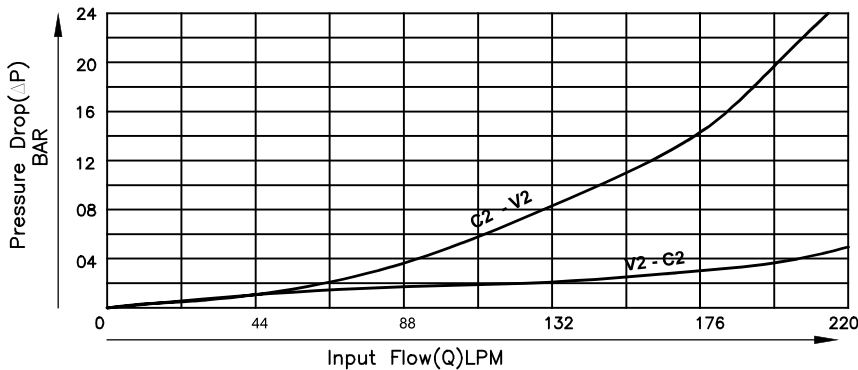
The SOCV Series, Single Over Center Valve has direct acting differential area poppet type relief valve with externally operated pilot piston and reverse free flow check valve design. The relief valve is normally set, at least 30% above maximum load induced pressure. The valve is best suited to control moving loads and to prevent them from running ahead of supply flow. When supply pressure is not applied the load is locked. But any surge pressure caused by load overrun or an external force will open the relief valve thus protecting the hydraulic actuator.

XX	MOUNTING STYLE
00	CARTRIDGE ONLY
IL	INLINE

YY	Pilot Ratio
18	1:8

ZZ	PORTS (V & C)
10	1" BSP (STD.)
114	1 1/4" BSP (STD.)

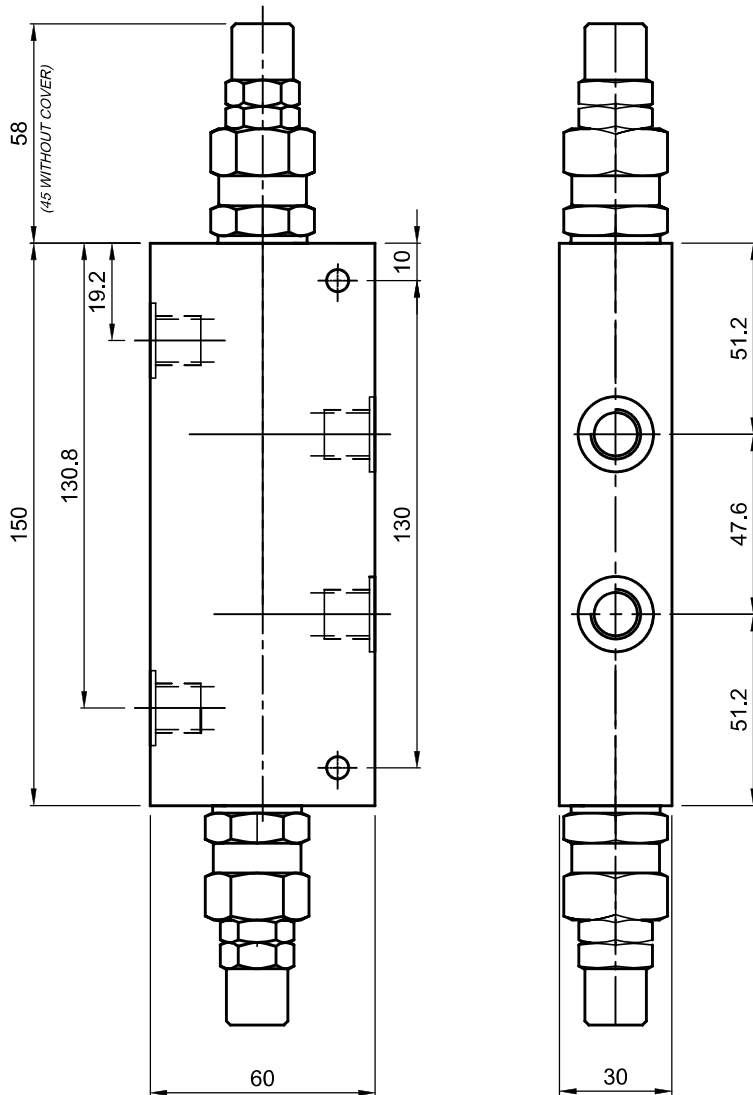
Performance Curve



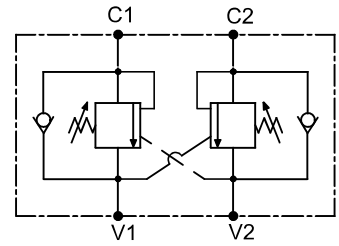


DUAL OVER CENTER VALVE

DOCV 02-IL-YY-ZZ



Cartridge With Body



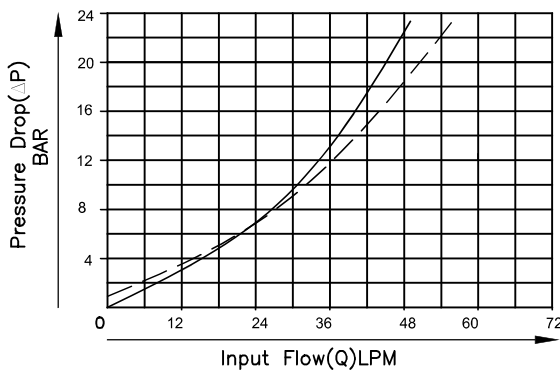
Specifications

Maximum Flow	40 LPM
Maximum Setting Pressure	350 Bar
Cavity	--

General Description

The DOCV Series, Dual Over Center Valves have a wide range of uses and represent good solution at the best price for many application, where lock and control is required on structures of high stability. Recommended to keep setting pressure 1.25 to 1.30 times the max. operating pressure.

Performance Curve



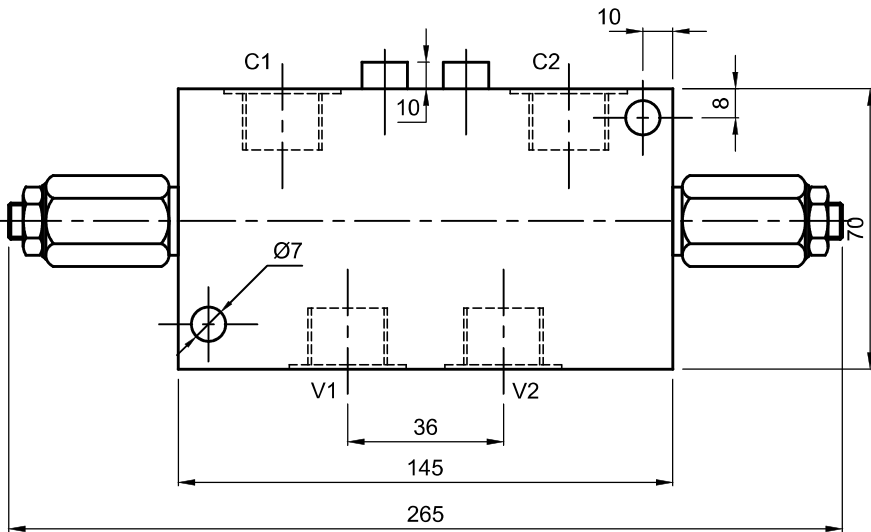
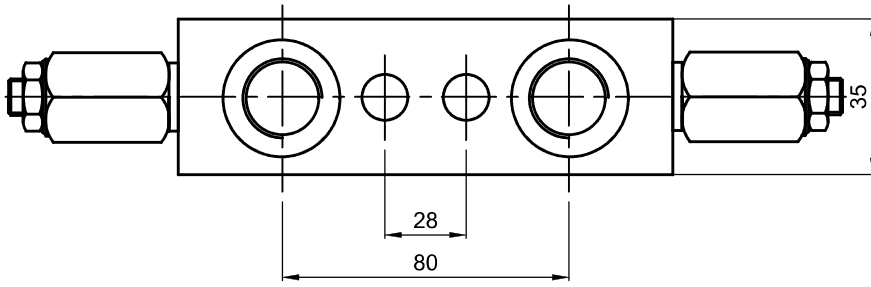
YY	Pilot Ratio
14	1 : 4.25

ZZ	PORTS
38	3/8" BSP
12	1/2" BSP

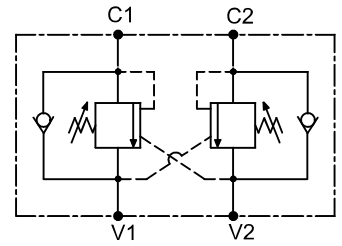


DUAL OVER CENTER VALVE

DOCV 03-IL-YY-ZZ



Cartridge With Body



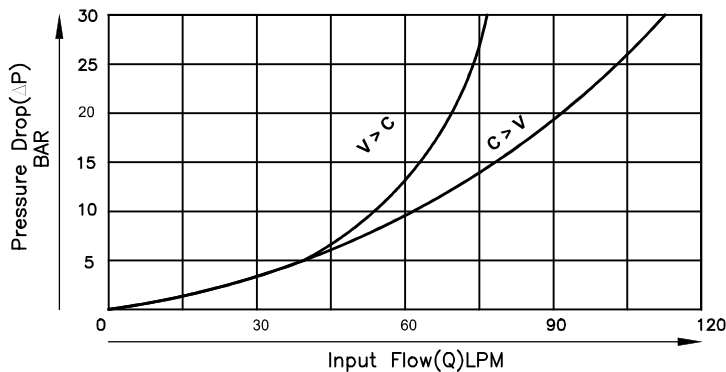
Specifications

Maximum Flow	80 LPM
Maximum Setting Pressure	350 Bar
Reseat Pressure	90% of crack pressure
Cavity	--

General Description

The DOCV Series, Dual Over Center Valves have a wide range of uses and represent good solution at the best price for many application, where lock and control is required on structures of high stability. Recomened to keep setting pressure 1.25 to 1.30 times the max. operating pressure.

Performance Curve



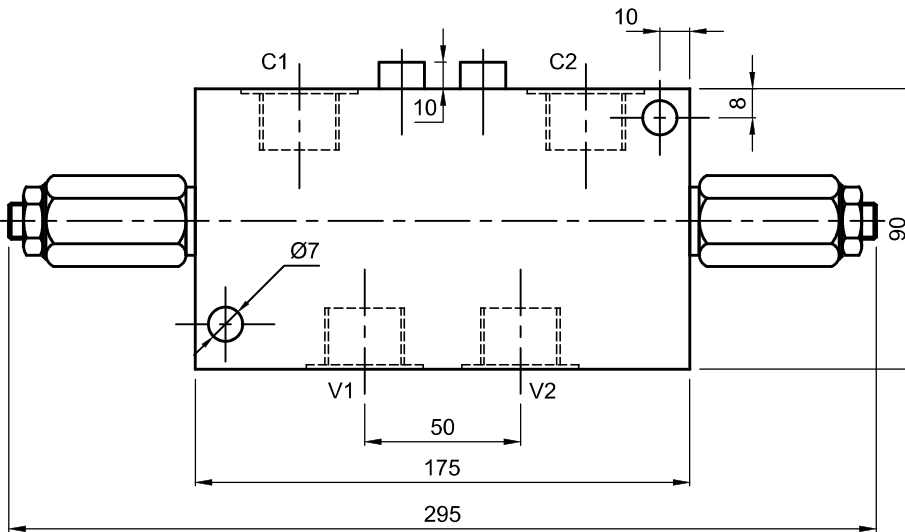
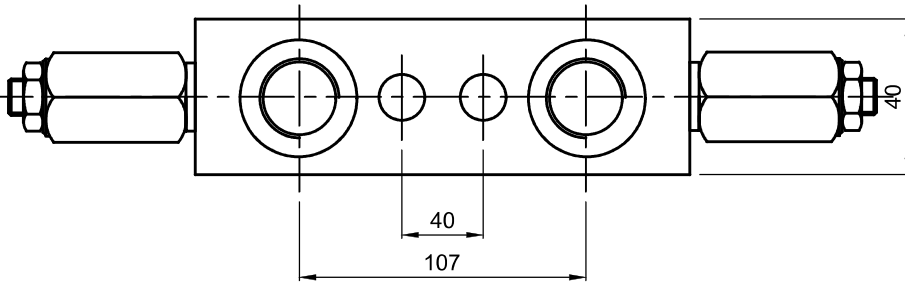
YY	Pilot Ratio
16	1:6

ZZ	PORTS
12	1/2" BSP

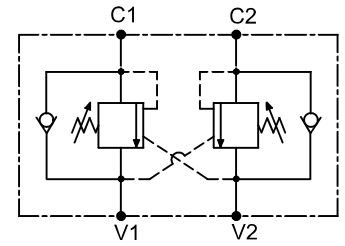


DUAL OVER CENTER VALVE

DOCV 04-IL-YY-ZZ



Cartridge With Body



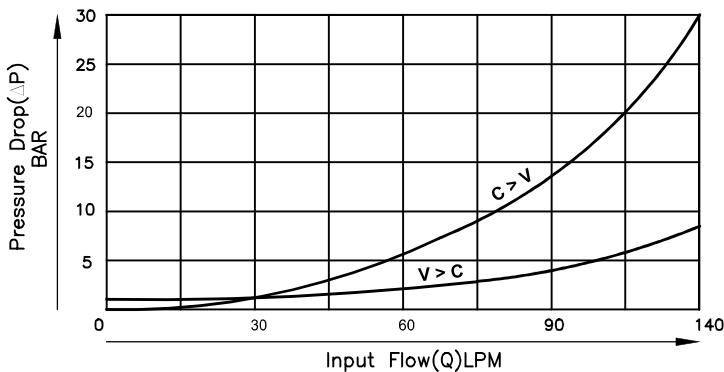
Specifications

Maximum Flow	140 LPM
Maximum Holding Pressure	350 Bar
Reseat Pressure	90% of crack pressure
Cavity	---

General Description

The DOCV Series, Dual Over Center Valves have a wide range of uses and represent good solution at the best price for many application, where lock and control is required on structures of high stability. Recomened to keep setting pressure 1.25 to 1.30 times the max. operating pressure.

Performance Curve



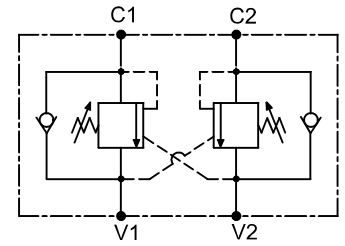
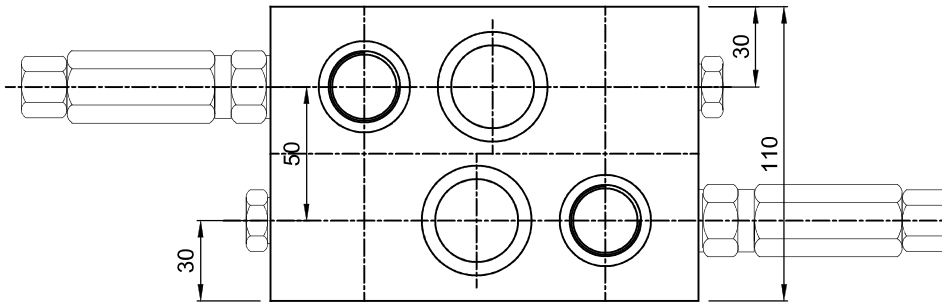
YY	Pilot Ratio
16	1:6

ZZ	PORTS
10	1" (STD.)



DUAL OVER CENTER VALVE

DOCV- 05-IL-YY-ZZ

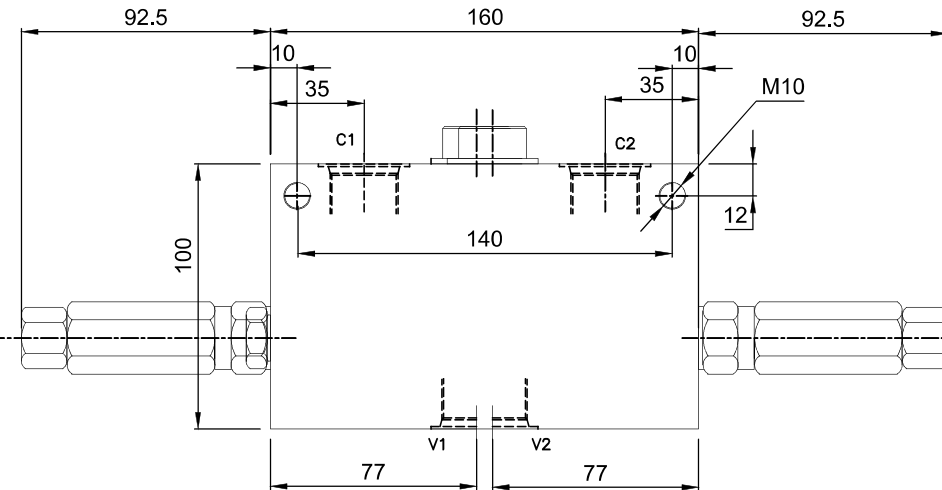


Specifications

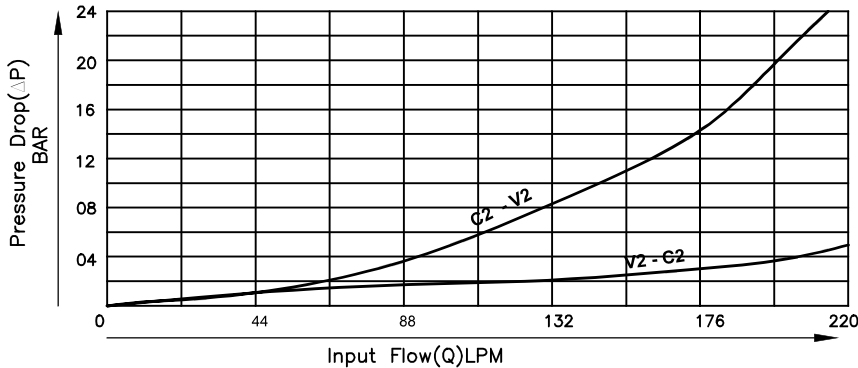
Maximum Flow	220 LPM
Maximum Setting Pressure	350 Bar
Cavity	---

General Description

The DOCV Series, Dual Over Center Valves have a wide range of uses and represent good solution at the best price for many application, where lock and control is required on structures of high stability. Recomened to keep setting pressure 1.25 to 1.30 times the max. operating pressure.



Performance Curve



YY	Pilot Ratio
18	1:8

ZZ	PORTS (V & C)
10	1" BSP (STD.)
114	1 1/4" BSP (STD.)