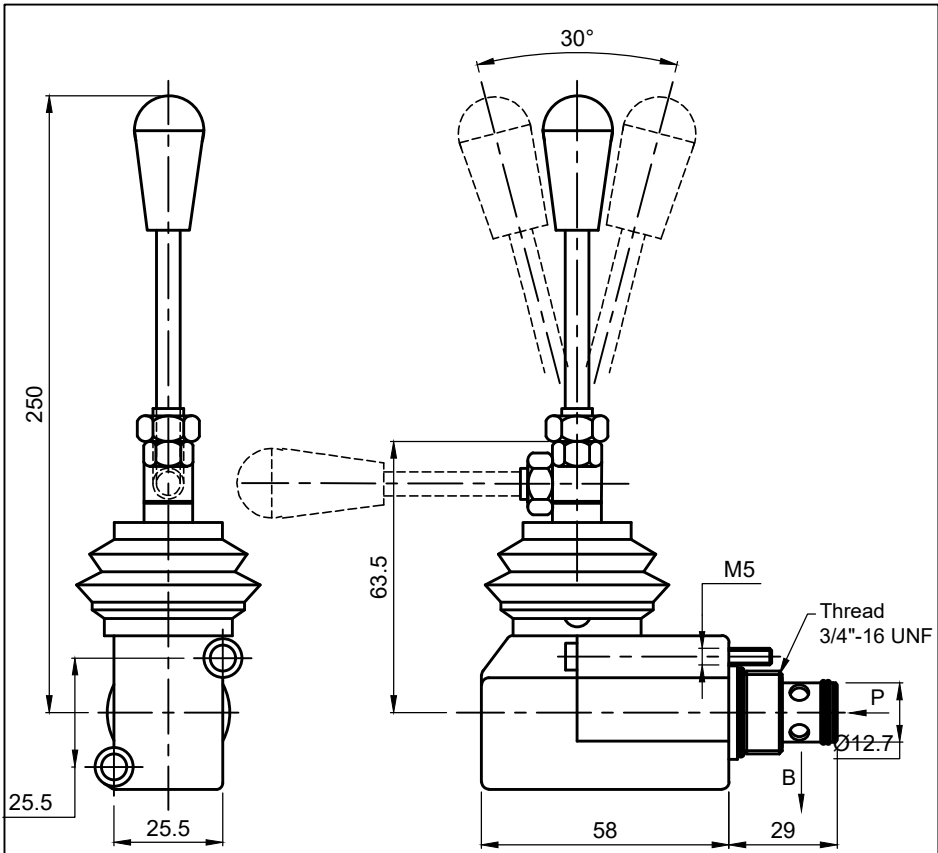




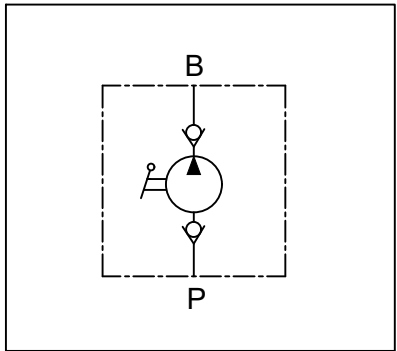
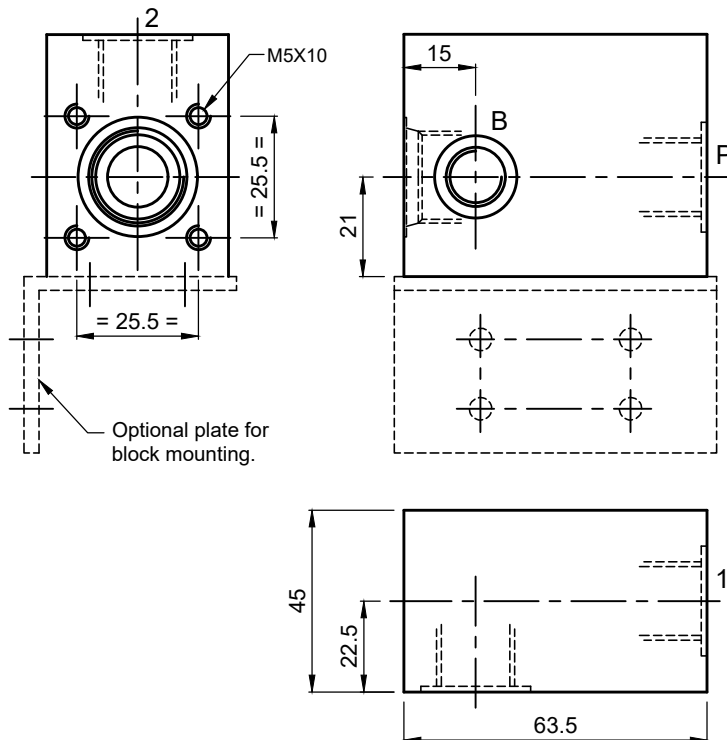
PRODUCT REFERENCE GUIDE

HAND PUMP (CARTRIDGE TYPE)

HP 1.5 YY-ZZ



Body For Cartridge



Specifications

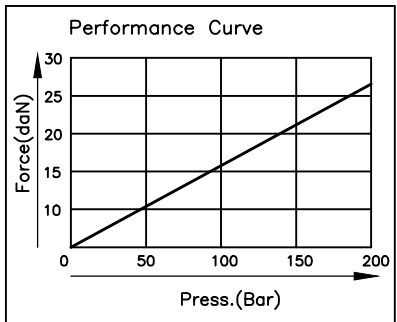
Displacement	1.5 cc
Maximum Pressure	210 Bar
Cavity	C08-2

General Description

The HP Series, Hand Pump Cartridge allow oil flow in one direction. They are equipped with lever and optional inline block which provide flexibility for use.

YY	Mounting Style
00	Cartridge
IL	Inline

ZZ	Ports
14	1/4" BSP

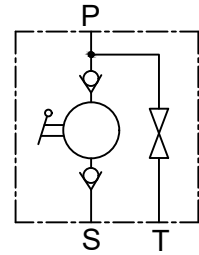
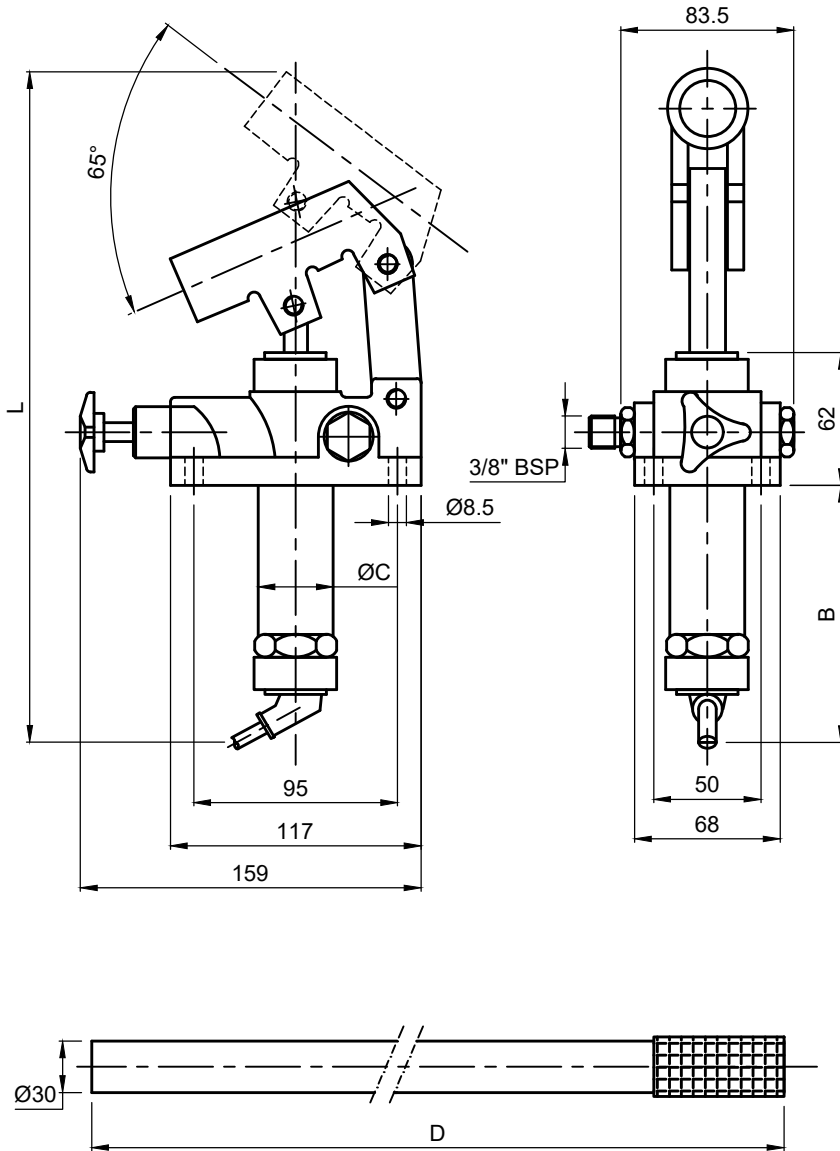




PRODUCT REFERENCE GUIDE

HAND PUMP WITHOUT ROTORY VALVE

HP XX-Y-Z-A



Specifications

Max. Working Press.	12 CC	300 BAR
	25 CC	175 BAR
	38 CC	125 BAR
	50 CC	90 BAR
Mounting	No Restriction	

General Description

The HP Series, Double action Hand Pump allow oil to flow in both direction. They are equipped with lever.

XX	Displacement in cm ³
12	12
25	25
38	38
50	50

Y	Relief Valve
*	Without Relief
R	With Relief

Z	Needle Valve
*	Without Needle
N	With Needle

A	Tank
*	Without Tank
T	With Tank

Table For Dimensions

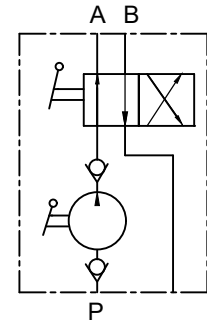
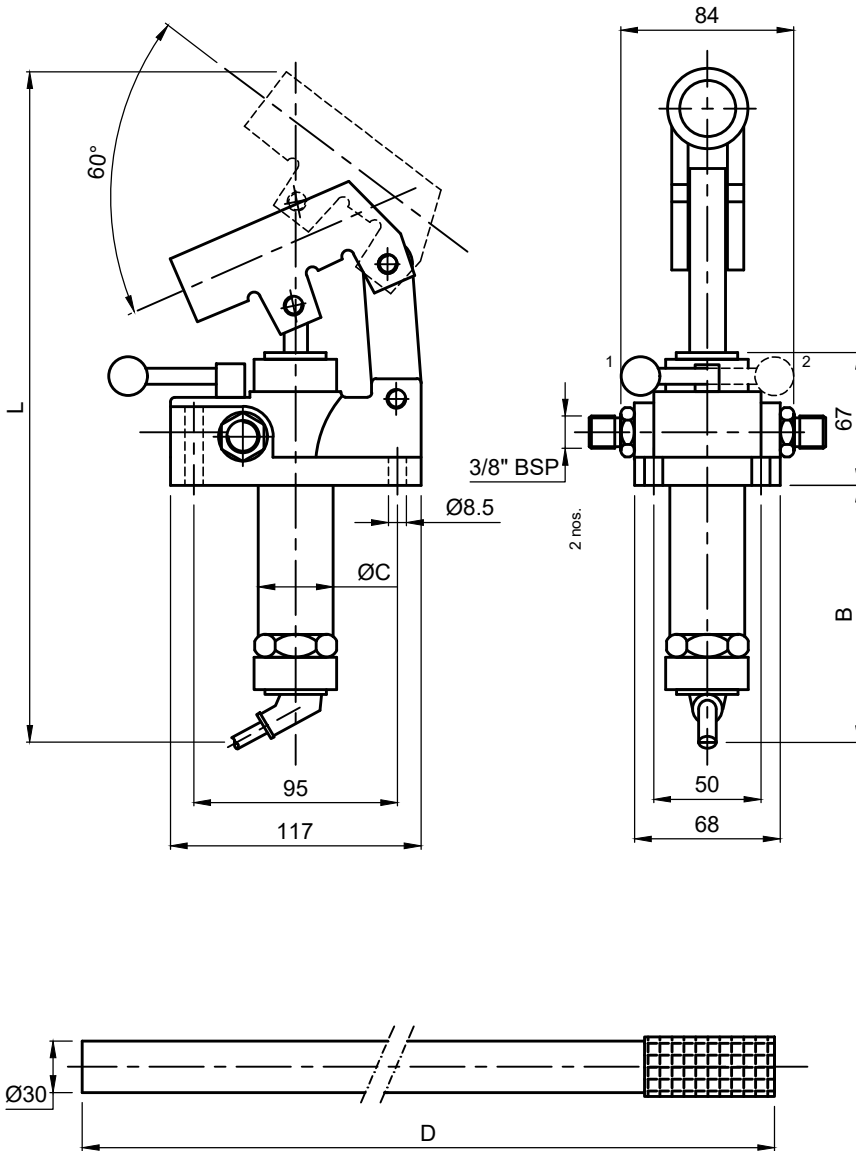
XX	Q cm ³ Disp.	Press. max.	B	ØC	L	D
12	12	245	125	35	325	610
25	25	185	125	35	325	610
38	38	160	125	35	325	750
50	50	120	125	35	325	750



PRODUCT REFERENCE GUIDE

HAND PUMP WITH ROTARY VALVE

HPR XX-Y-A



Specifications

Max. Working Press.	12 CC	300 BAR
	25 CC	175 BAR
	38 CC	125 BAR
	50 CC	90 BAR
Mounting	No Restriction	

General Description :

The HPR Series , Hand Pump With Rotary Valve are equipped with internal 4-way flow diverter and lever.

XX	Displacement in cm ³
12	12
25	25
38	38
50	50

Y	Relief Valve
*	Without Relief
R	With Relief

A	Tank
*	Without Tank
T	With Tank

Table For Dimensions

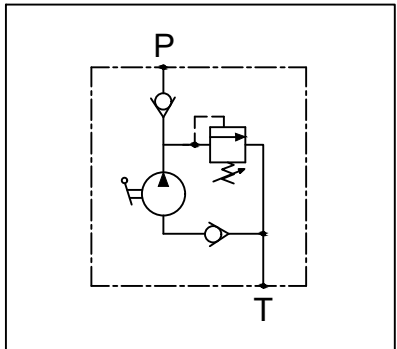
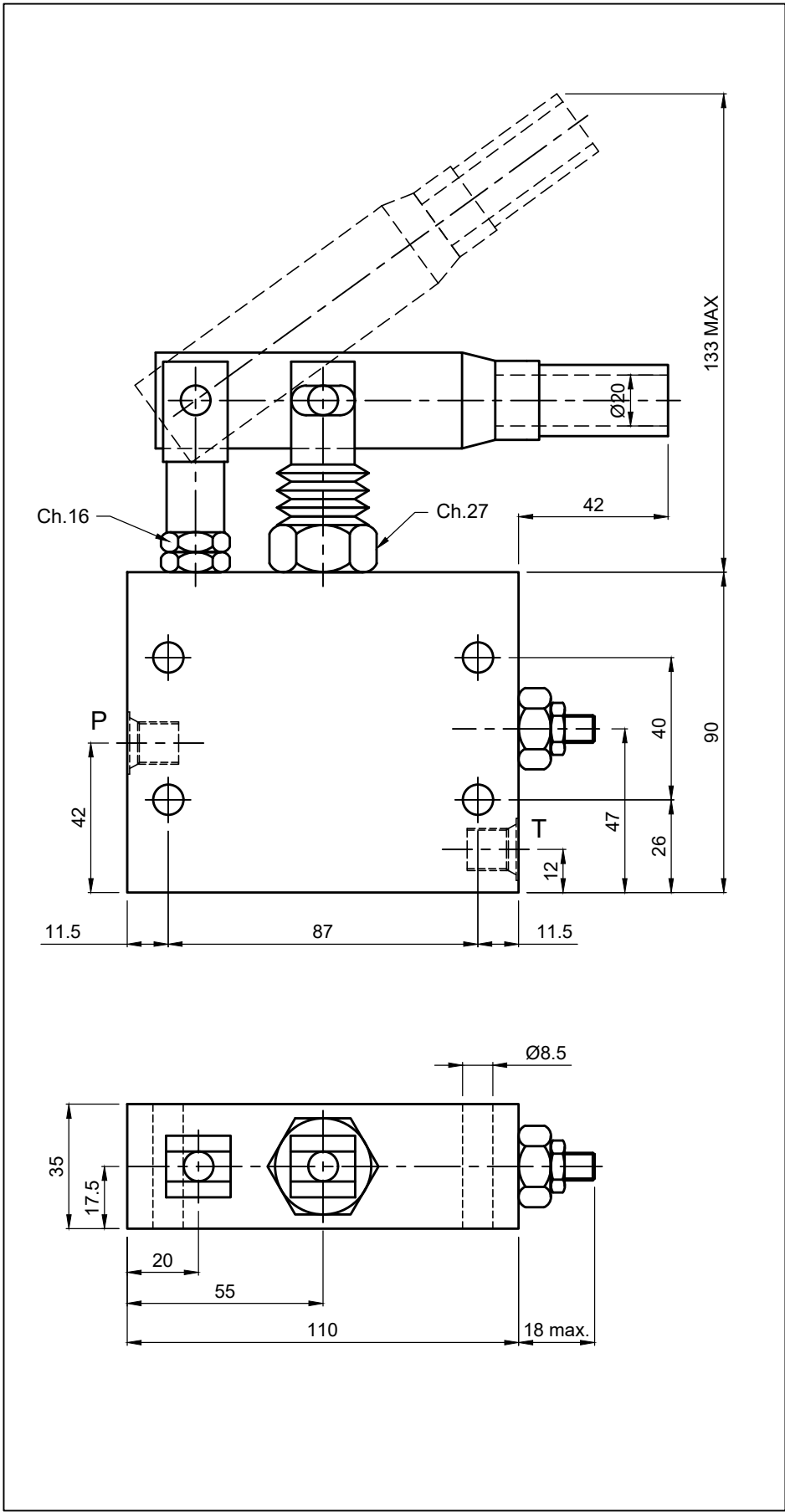
XX	Q cm ³ Disp.	Press. max.	B	ØC	L	D
12	12	245	125	35	325	610
25	25	185	125	35	325	610
38	38	160	125	35	325	750
50	50	120	125	35	325	750



PRODUCT REFERENCE GUIDE

HAND PUMP (INLINE BODY)

HP-XX-IL-YY



General Description

The HP Series, Hand Pump allow oil flow in one direction. They are equipped with inbuilt check valve, and lever.

XX	DISP. & MAX. PR.
05	5.5cc & 250 bar
16	16cc & 250 bar

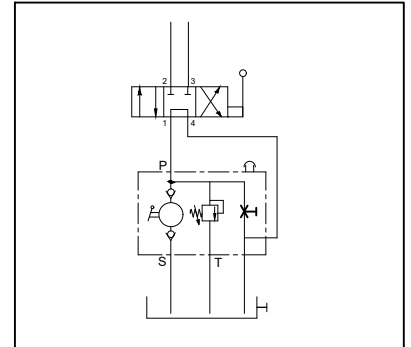
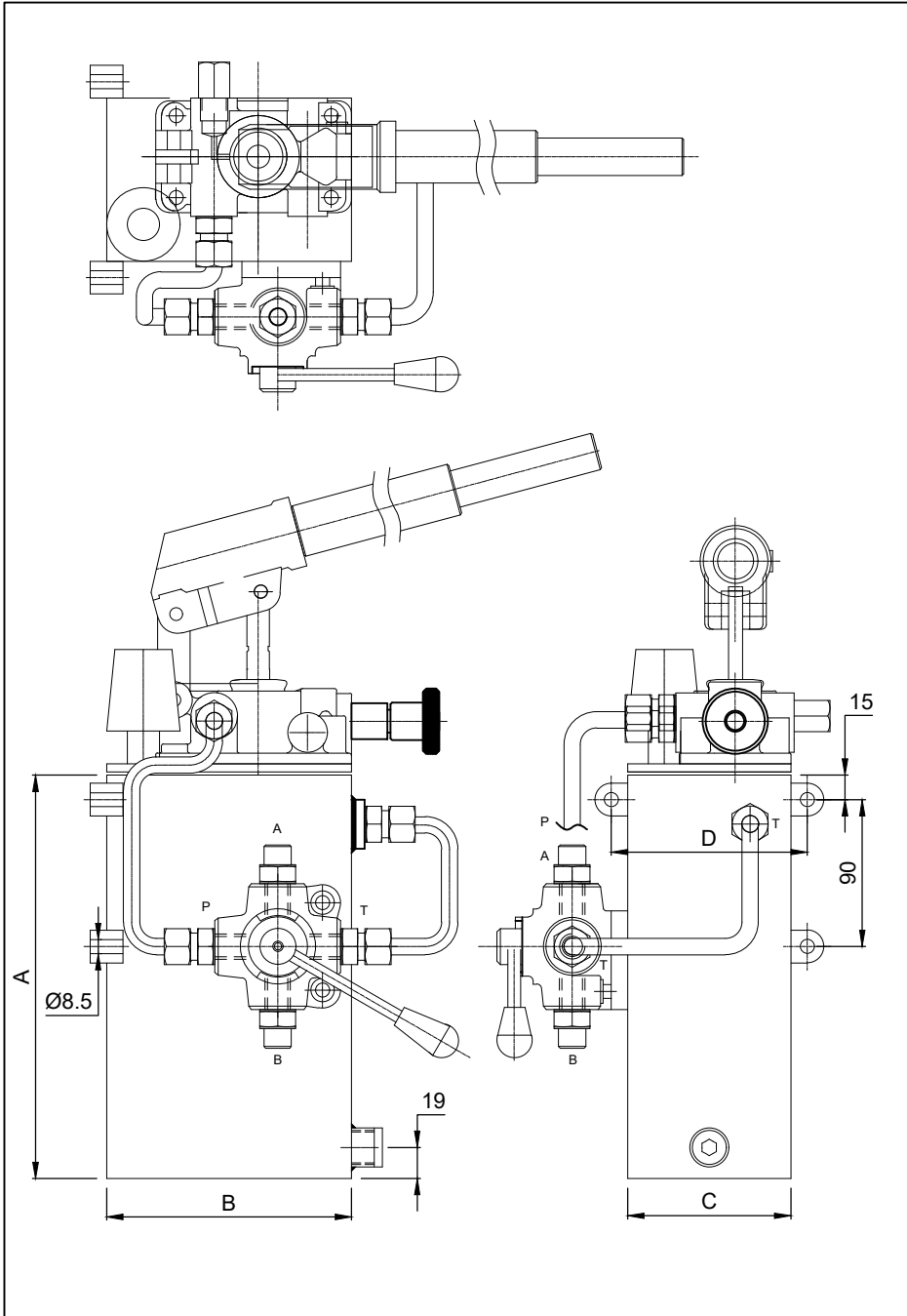
ZZ	Ports
14	1/4" BSP
38	3/8" BSP



PRODUCT REFERENCE GUIDE

**HAND PUMP WITH EXTERNAL ROTARY VALVE
AND INBUILT RELIEF & NEEDLE VALVE**

HPR-E- XX-YY-ZZ



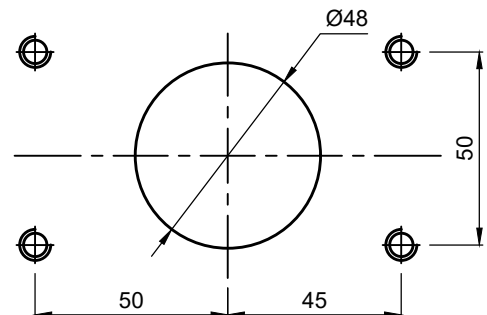
General Description

The HPR-E Series, Hand Pumps With Rotary Valves are equipped with external flow diverter and lever.

XX	DISP. & MAX. PR.
12	12cc & 300 bar
25	25cc & 175 bar
38	38 cc & 125 bar
50	50 cc & 90 bar

YY	DC VALVE CONFIGURATION
01	
02	
03	

ZZ	Capacity (Liters)	A	B	C	D
01	1	120	150	100	120
03	3	247	150	100	120
05	5	200	175	175	195
10	10	376	175	175	195



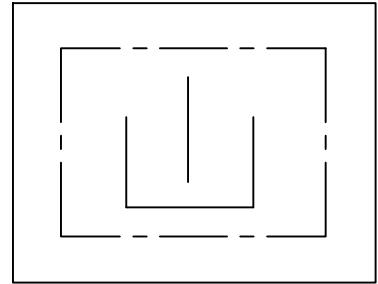
Drilling to be carried out on the tank for the fixing of the pump.



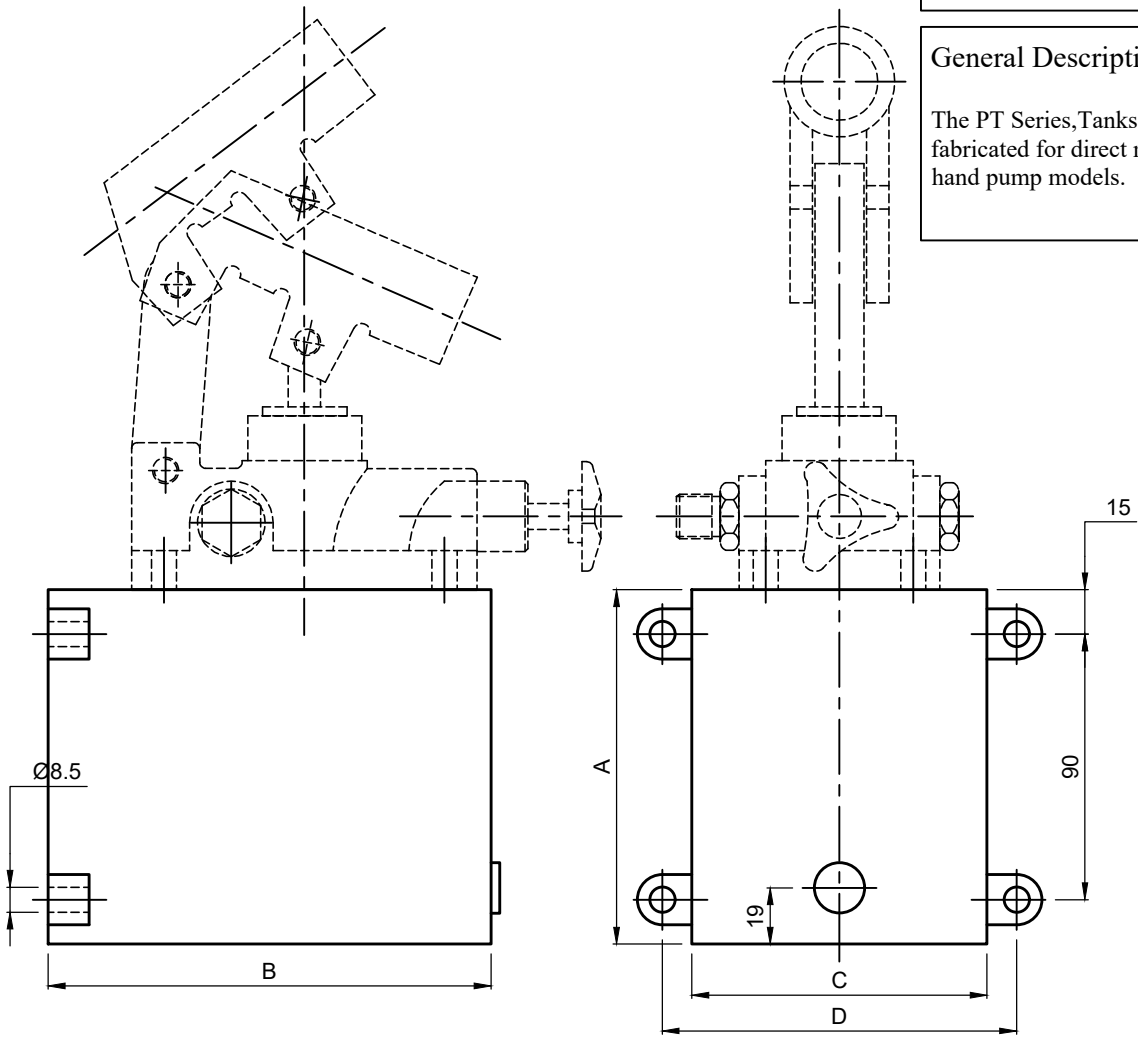
PRODUCT REFERENCE GUIDE

TANK FOR HAND PUMP

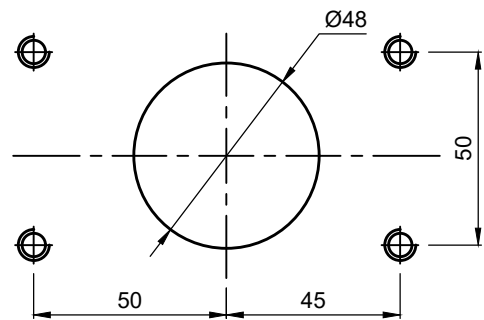
PT-XX



General Description
 The PT Series, Tanks are M.S. fabricated for direct mounting hand pump models.



XX	Capacity (Liters)	A	B	C	D
01	1	120	150	100	120
03	3	247	150	100	120
05	5	200	175	175	195
10	10	376	175	175	195



Drilling to be carried out on the tank for the fixing of the pump.

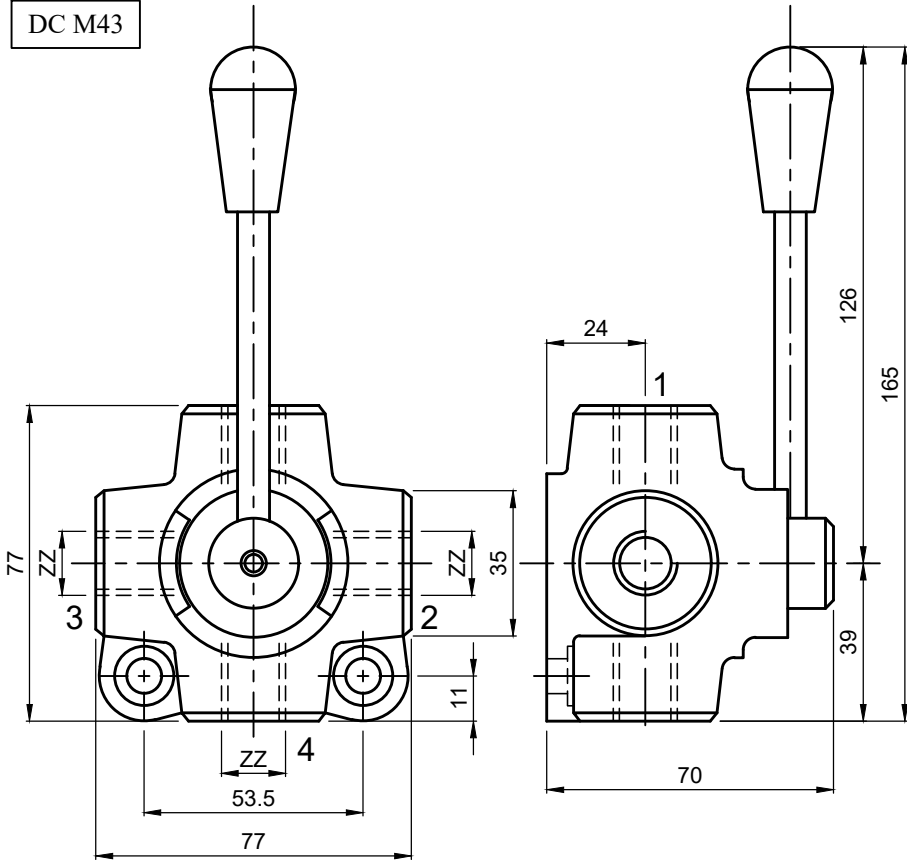


PRODUCT REFERENCE GUIDE

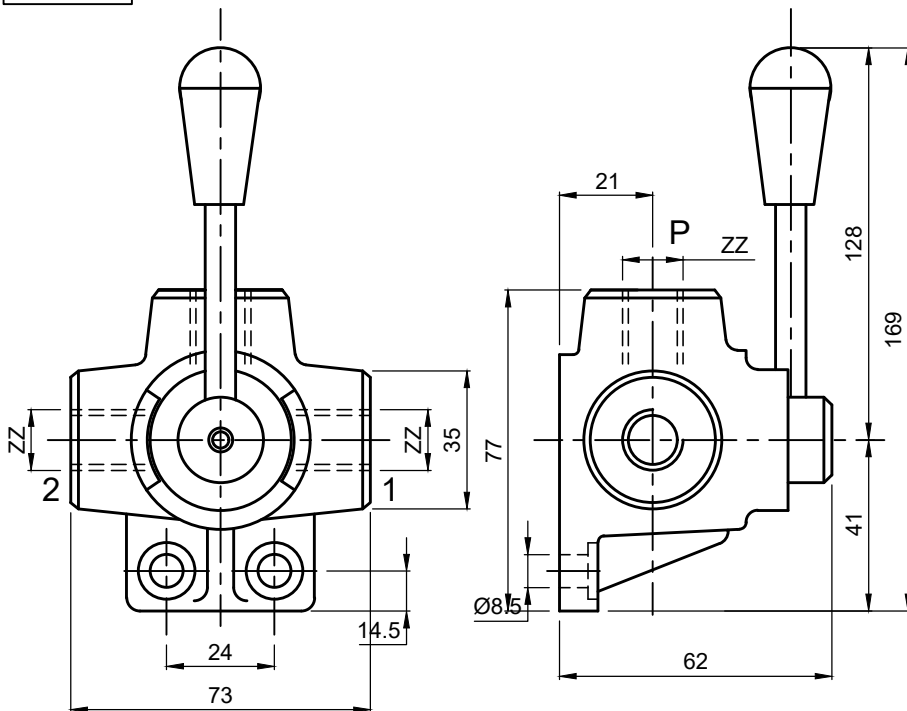
MANUAL ROTARY SELECTOR VALVE

DC M-XX-YY-ZZ

DC M43



DC M43



Specifications

Maximum Flow	40 LPM
Maximum Pressure	245 Bar

General Description

The DC M Series, High Pressure manual rotary Valves Are Employed To Reverse The Oil Flow.

XX	VALVE TYPE
43	4 WAY 3 POSITION
33	3 WAY 3 POSITION
32	3 WAY 2 POSITION

YY	DC VALVE CONFIGURATION
01	
02	
03	
04	
05	
06	

ZZ	PORTS
38	3/8" BSP