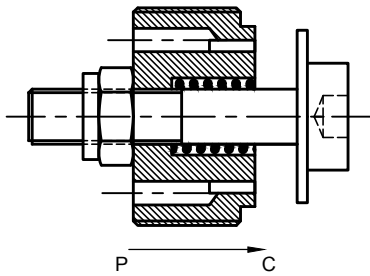


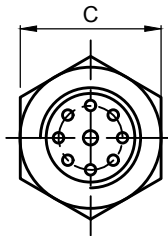
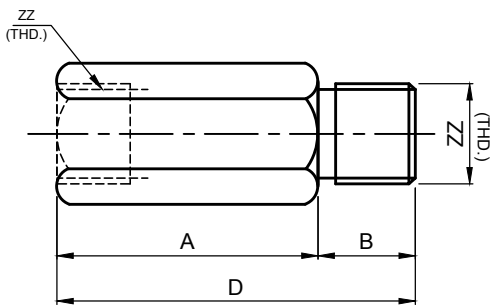


HOSE BURST VALVE

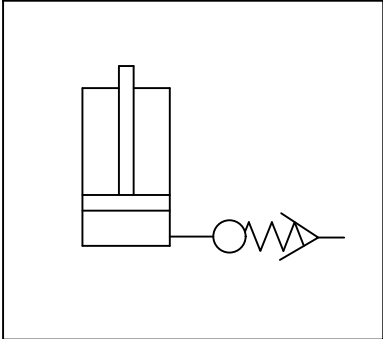
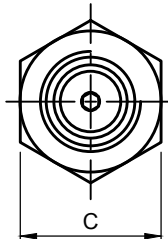
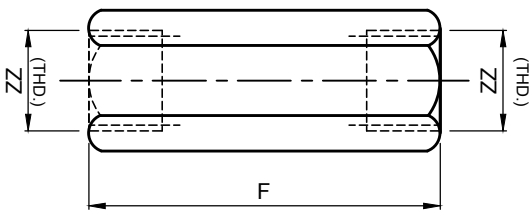
HBS XX-YY-ZZ



Body - 'A'



Body - 'B'



Specifications

Max. Working Press.	350 Bar
Mounting	As close to the actuator as possible.
Filtration	Maintain SAE Class 4

General Description

The HBS Series, Hose Burst Valves are designed to allow free flow from actuators if the descend speed of load is within the pre set limit and totally lock the flow if for any reason the descend speed tend to go above the pre set limit. For example in case of hose failure. It is recommended to fit a flow regulator downstream of the hose safe valve at the end of the flexible hose. Pre set the hose safe valve for a flow  $\geq 1.5$  times the regulated flow.

<b>XX</b>	<b>Mounting Style</b>
00	Cartridge
IL	Inline

<b>YY</b>	<b>Flow Set (Example)</b>
02	2 LPM
05	5 LPM
10	10 LPM

<b>ZZ</b>	<b>PORT/SIZE</b>
14	1/4" BSP
38	3/8" BSP
12	1/2" BSP
34	3/4" BSP
10	1" BSP

Dimensions

CARTRIDGE SIZE ZZ	A	B	C	D	F	FLOW LPM
14	40.0	10.0	19.0	50.0	48.0	5-18
38	43.0	12.0	22.0	55.0	52.0	5-38
12	56.0	14.0	27.0	70.0	62.0	25-70
34	59.0	16.0	36.0	75.0	70.0	40-125
1	70.0	18.0	41.0	88.0	85.0	125-225