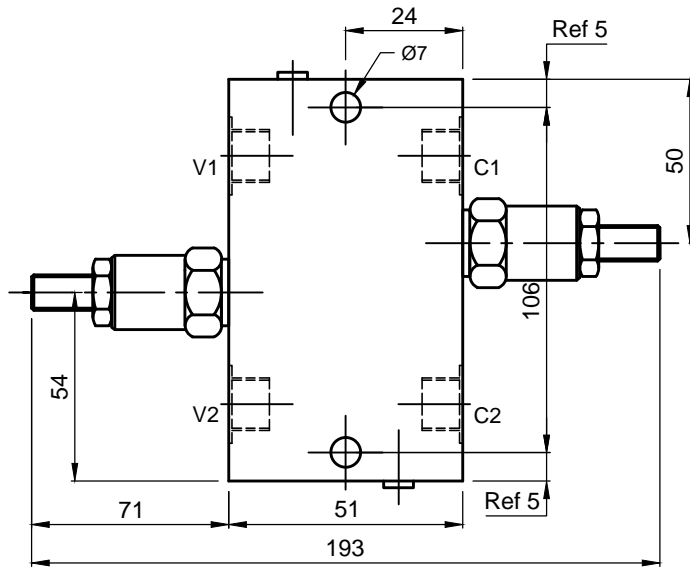


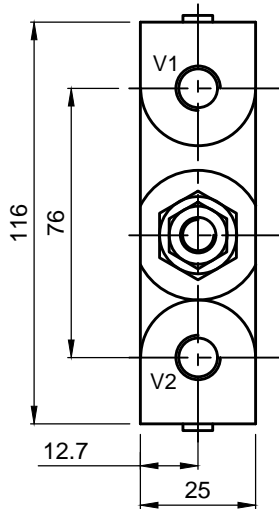


DUAL CROSS OVER RELIEF VALVES

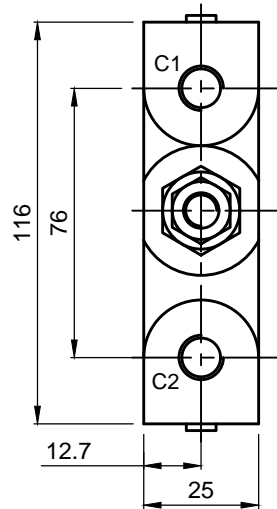
XRDD 02-IL-YY-ZZ



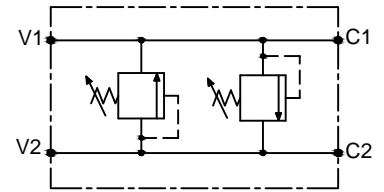
FRONT VIEW



L.H.SIDE VIEW



R.H.SIDE VIEW



Specifications

Maximum Flow	40 LPM
Maximum Setting Pressure	245 Bar
Reseat Pressure	85% of set pressure
HDI Cartridge	RDD 02

General Description:

The XRDD Series, Dual Cross Over Relief Valves are direct acting poppet type differential area relief valve. Gives fast response and low leakage.

These valves are best suited for overload and shock protection application. (e.g. rotary actuators). When pressure in one port exceeds the valve setting, valve opens allowing oil to other port (from A port to B port or B port to A port).

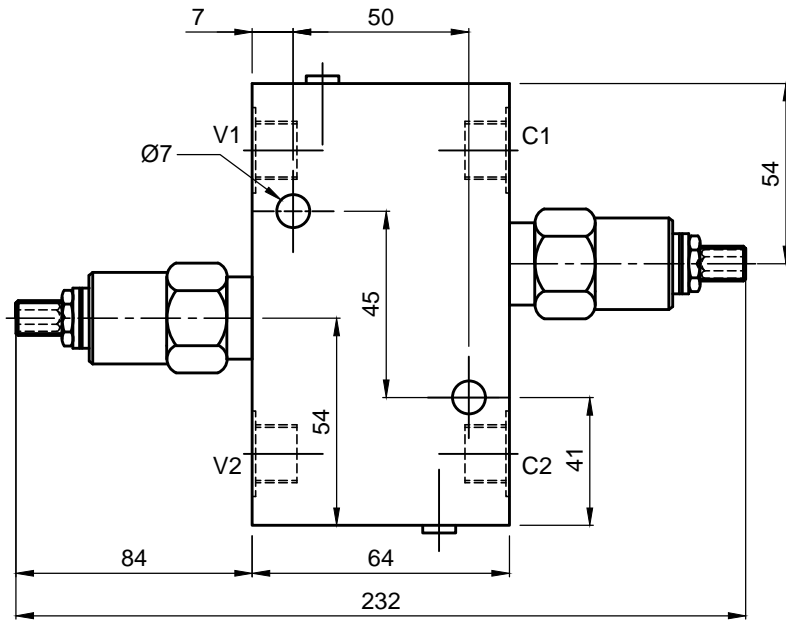
YY	Press.Range(Bar)
10	10 - 105
20	20 - 170
30	30 - 245

ZZ	PORTS
38	3/8" BSP (STD.)
12	1/2" BSP

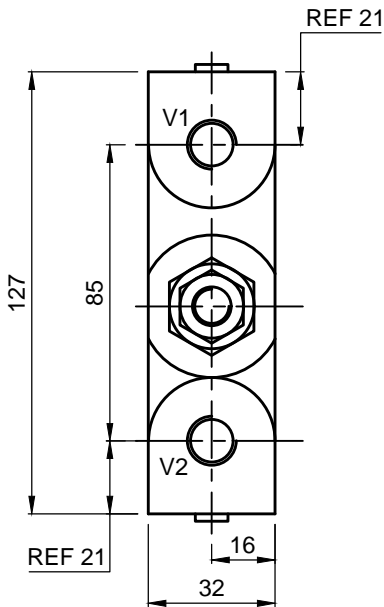


DUAL CROSS OVER RELIEF VALVES

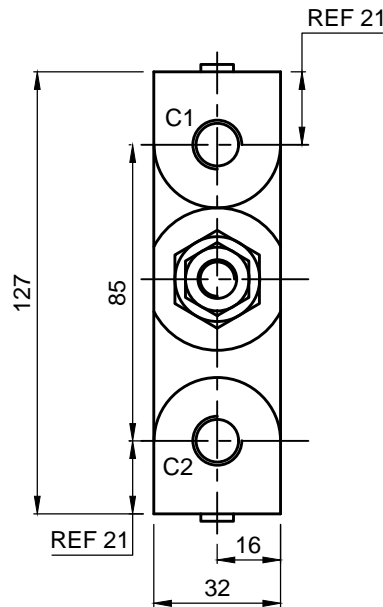
XRDD 03-IL-YY-ZZ



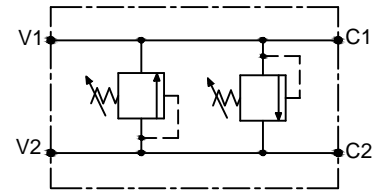
FRONT VIEW



L.H.SIDE VIEW



R.H.SIDE VIEW



Specifications

Maximum Flow	80 LPM
Maximum Setting Pressure	245 Bar
Reseat Pressure	85% of set pressure
HDI Cartridge	RDD 03

General Description:

The XRDD Series, Dual Cross Over Relief Valves are direct acting poppet type differential area relief valve gives fast response and low leakage.

These valve is best suited for overload and shock protection application. (e.g. rotary actuators). When pressure in one port exceeds the valve setting, valve opens allowing oil to other port (from A port to B port or B port to A port).

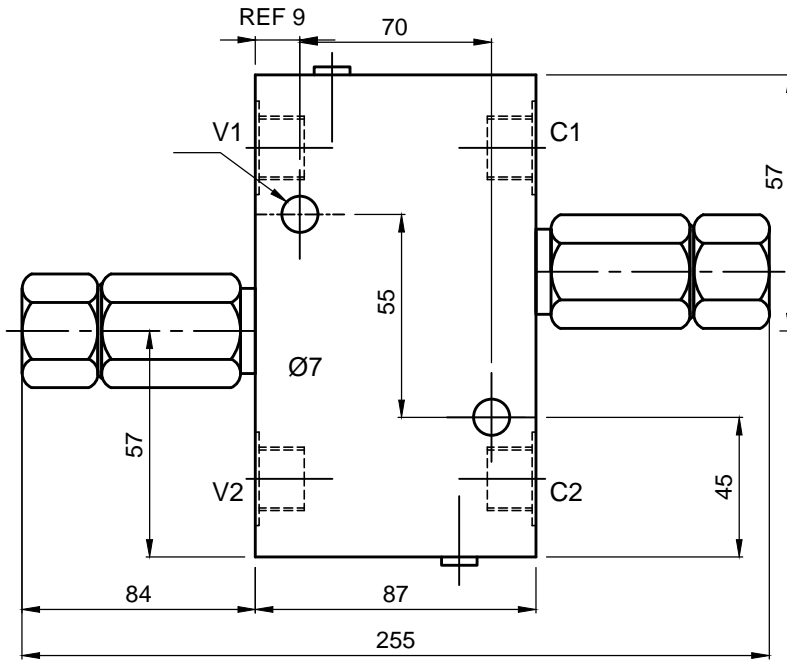
YY	Press.Range(Bar)
10	10 - 105
20	20 - 170
30	30 - 245

ZZ	PORTS
12	1/2" BSP (STD.)
34	3/4" BSP

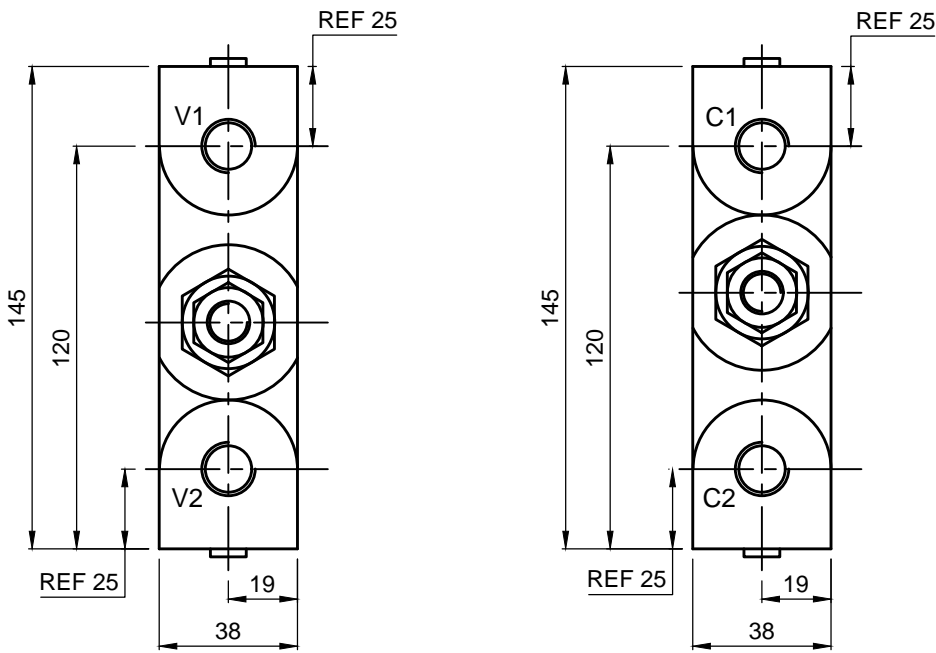


DUAL CROSS OVER RELIEF VALVES

XRDD 04-IL-YY-ZZ

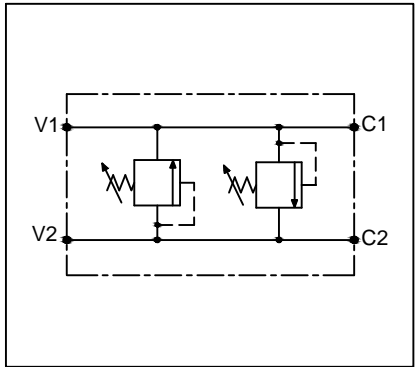


FRONT VIEW



L.H.SIDE VIEW

R.H.SIDE VIEW



Specifications

Maximum Flow	150 LPM
Maximum setting Pressure	245 Bar
Reseat Pressure	90% of crack pressure
HDI Cartridge	RDD 04

General Description:

The XRDD Series, Dual Cross Over Relief Valves are direct acting poppet type differential area relief valve gives fast response and low leakage.

These valve is best suited for overload and shock protection application. (e.g. rotary actuators). When pressure in one port exceeds the valve setting, valve opens allowing oil to other port (from A port to B port or B port to A port).

YY	Press.Setting(Bar)
10	10 - 105
20	20-170
30	30 - 245

ZZ	PORTS
34	3/4" BSP (STD.)
10	1" BSP