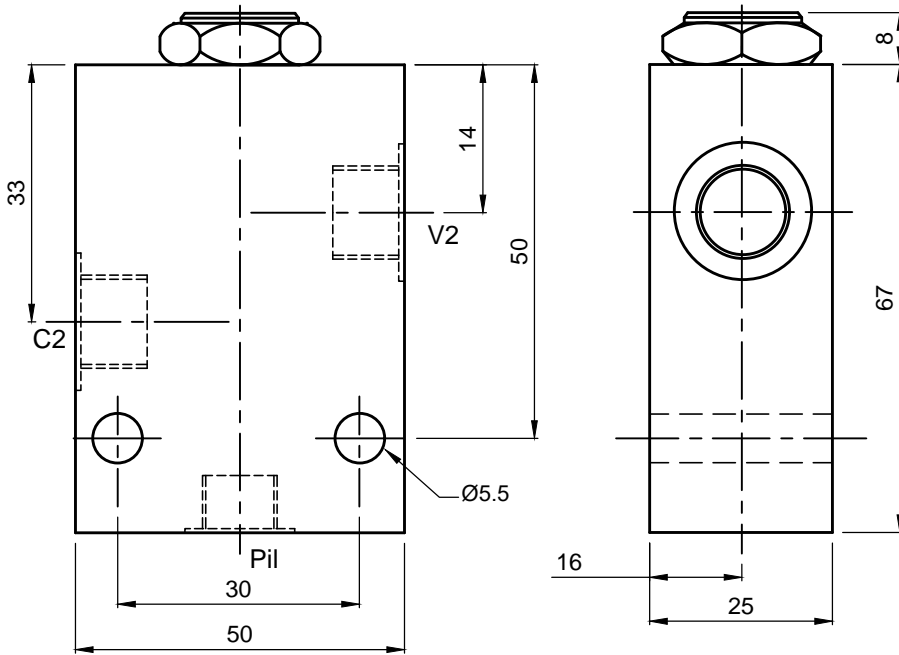


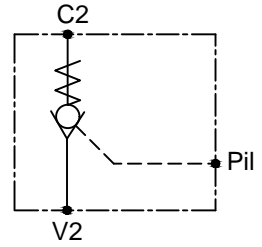


SINGLE PILOT OPERATED CHECK VALVE

SPC 02-IL-YY-ZZ



Cartridge With Body



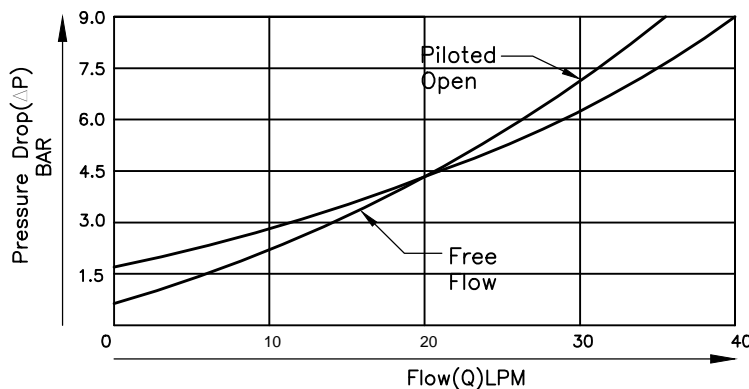
Specifications

Maximum Flow	40 LPM
Maximum Pressure	245 Bar
Pilot Ratio	1:4
Cavity	---

General Description

The SPC Series, Single Pilot Operated Check Valves positively lock an actuator on selected one end or permit flow to a portion of a circuit and do not allow reverse flow until adequate pilot pressure is supplied to the pilot port.

Performance Curve



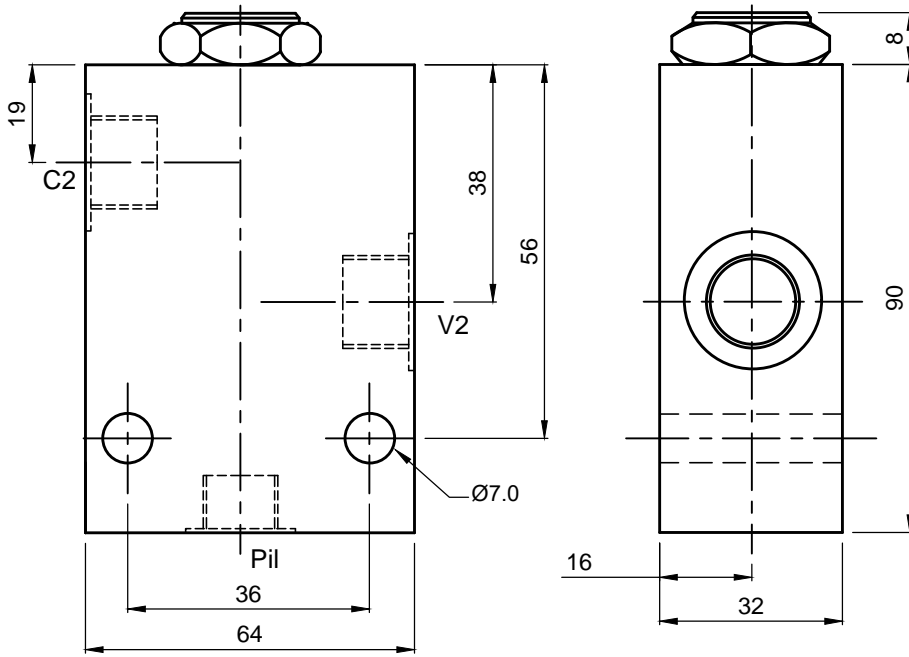
YY	Craking Press.(Bar)
14	1.4
45	4.5

ZZ	PORTS
38	3/8" BSP (STD.)
12	1/2" BSP

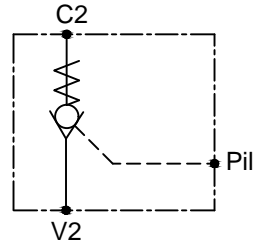


SINGLE PILOT OPERATED CHECK VALVE

SPC 03-IL-YY-ZZ



Cartridge With Body



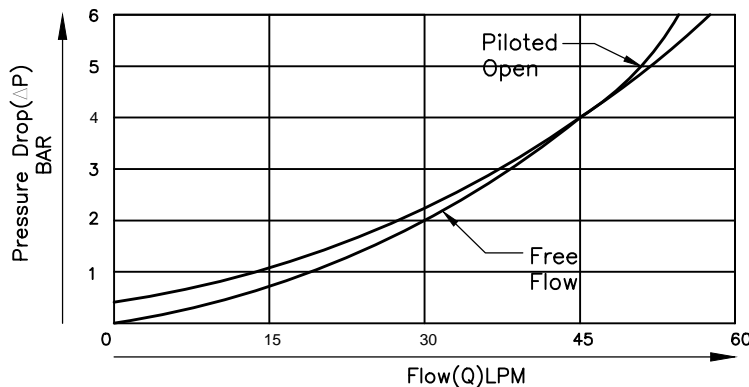
Specifications

Maximum Flow	60 LPM
Maximum Operating Pressure	245 Bar
Pilot Ratio	1:4
Cavity	---

General Description

The SPC Series, Single Pilot Operated Check Valves positively lock an actuator on selected one end or permit flow to a portion of a circuit and do not allow reverse flow until adequate pilot pressure is supplied to the pilot port.

Performance Curve



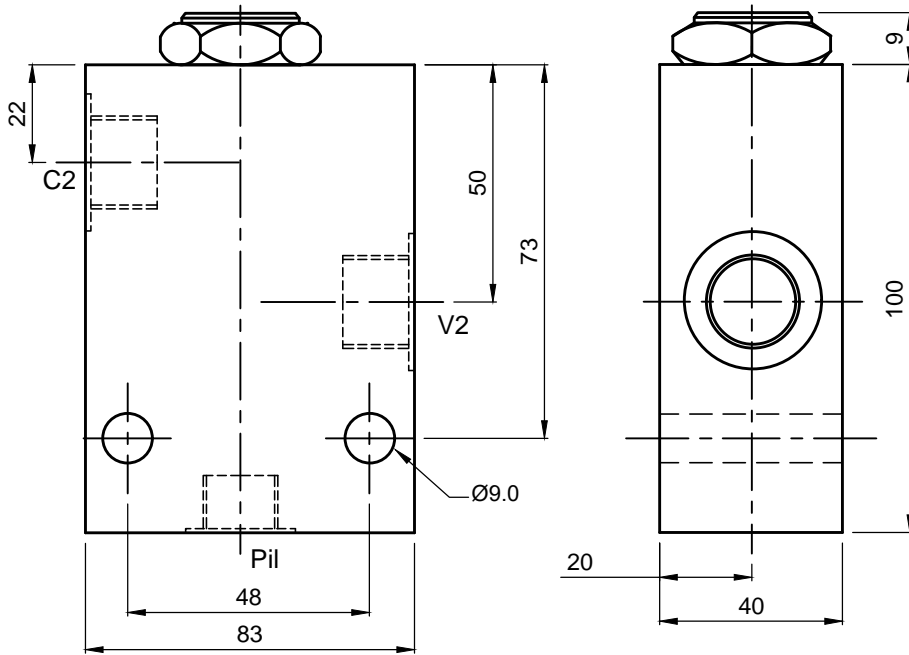
YY	Craking Press.(Bar)
14	1.4
45	4.5

ZZ	PORTS
38	3/8" BSP
12	1/2" BSP (STD.)

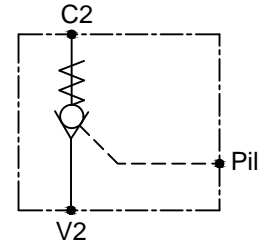


SINGLE PILOT OPERATED CHECK VALVE

SPC 04-IL-YY-ZZ



Cartridge With Body



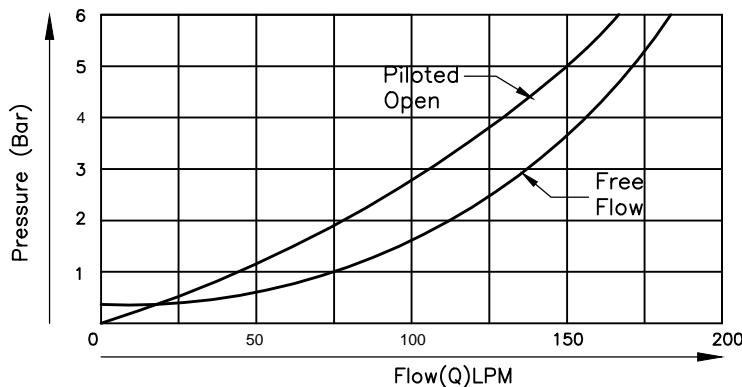
Specifications

Maximum Flow	120 LPM
Maximum Operating Pressure	245 Bar
Pilot Ratio	1:4
Cavity	---

General Description

The SPC Series, Single Pilot Operated Check Valves positively lock an actuator on selected one end or permit flow to a portion of a circuit and do not allow reverse flow until adequate pilot pressure is supplied to the pilot port.

Performance Curve



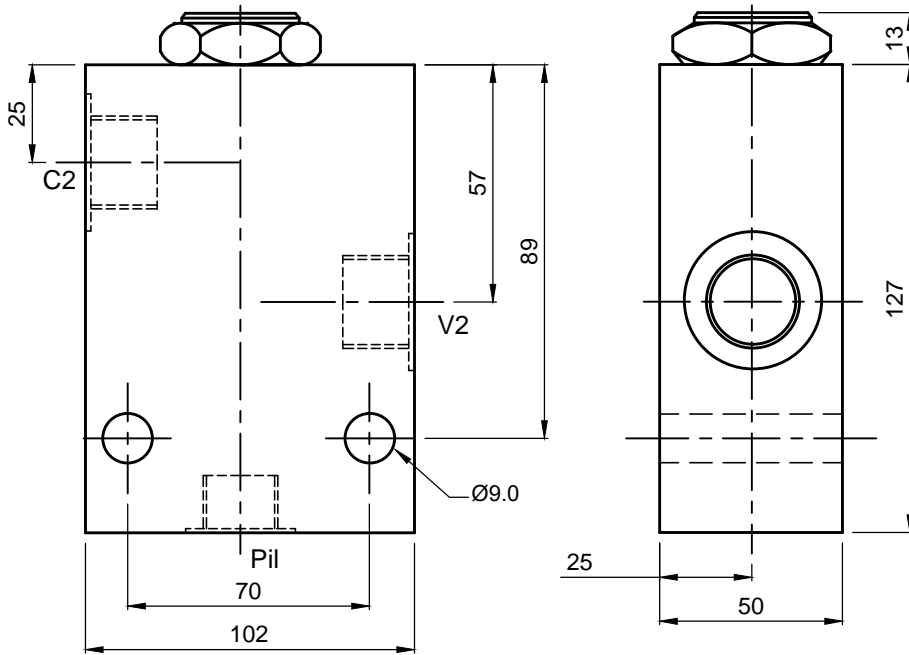
YY	Craking Press.(Bar)
14	1.4
45	4.5

ZZ	PORTS
34	3/4" BSP (STD.)
10	1"

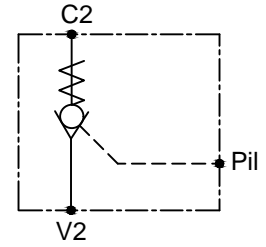


SINGLE PILOT OPERATED CHECK VALVE

SPC 05-IL-YY-ZZ



Cartridge With Body



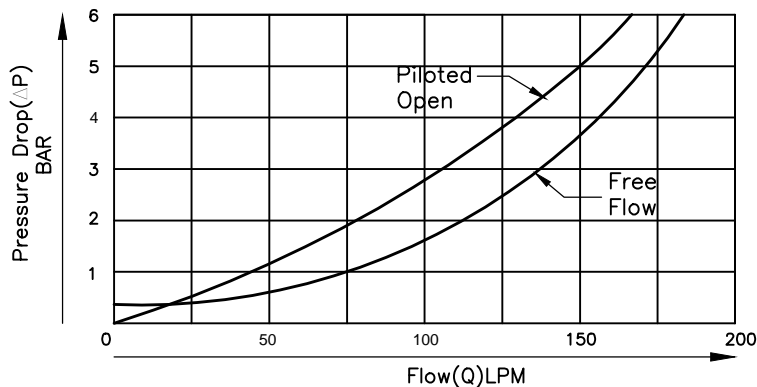
Specifications

Maximum Flow	200 LPM
Maximum Operating Pressure	245 Bar
Pilot Ratio	1:4
Cavity	---

General Description

The SPC Series, Single Pilot Operated Check Valves positively lock an actuator on selected one end or permit flow to a portion of a circuit and do not allow reverse flow until adequate pilot pressure is supplied to the pilot port.

Performance Curve



YY	Craking Press.(Bar)
14	1.4
45	4.5

ZZ	PORTS
114	1 1/4" BSP
10	1" (STD.)