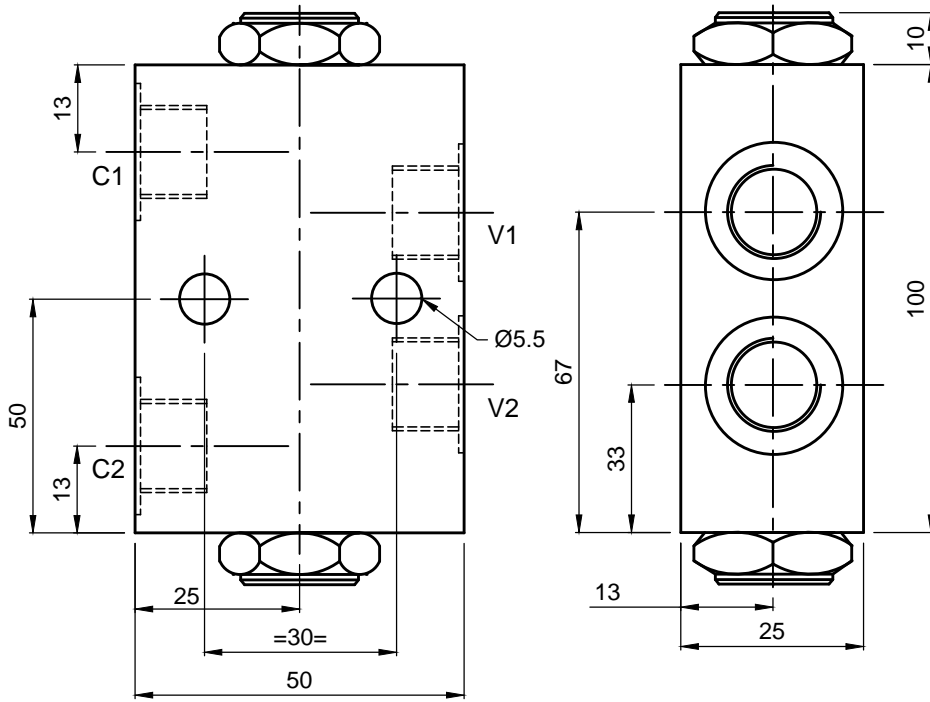


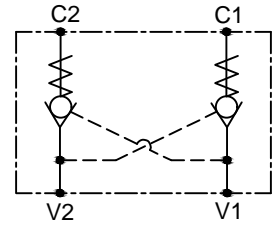


DUAL PILOT OPERATED CHECK VALVE

DPC 02-IL-YY-ZZ



Cartridge With Body



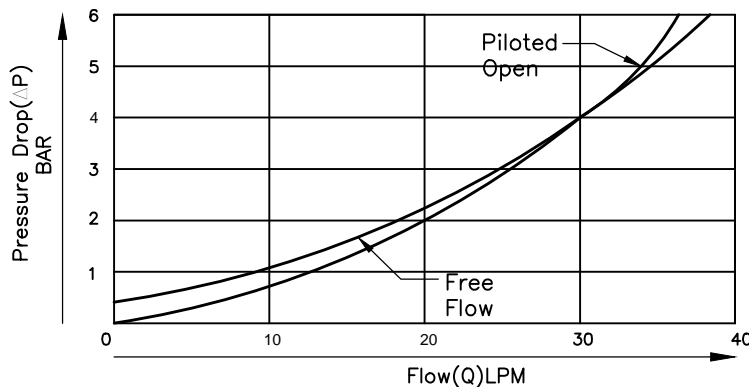
Specifications

| | |
|------------------|---------|
| Maximum Flow | 40 LPM |
| Maximum Pressure | 245 Bar |
| Pilot Ratio | 1:4 |

General Description

The DPC Series, Dual Pilot Operated Check Valves positively lock an actuator in position on both the ends and do not allow movement until the actuators are powered into motion.

Performance Curve



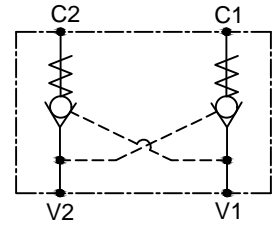
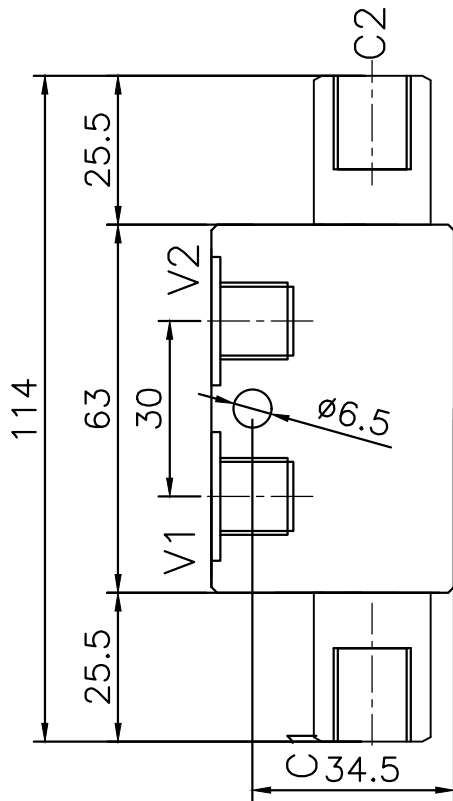
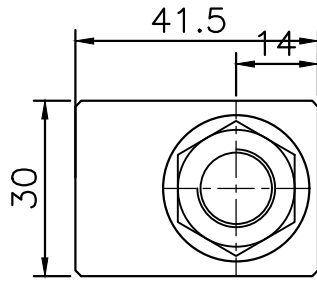
| YY | Craking Press.(Bar) |
|----|---------------------|
| 14 | 1.4 |
| 45 | 4.5 |

| ZZ | PORTS |
|----|-----------------|
| 38 | 3/8" BSP (STD.) |
| 12 | 1/2" BSP |



DUAL PILOT OPERATED CHECK VALVE

DPC 02-IL-YY-ZZ



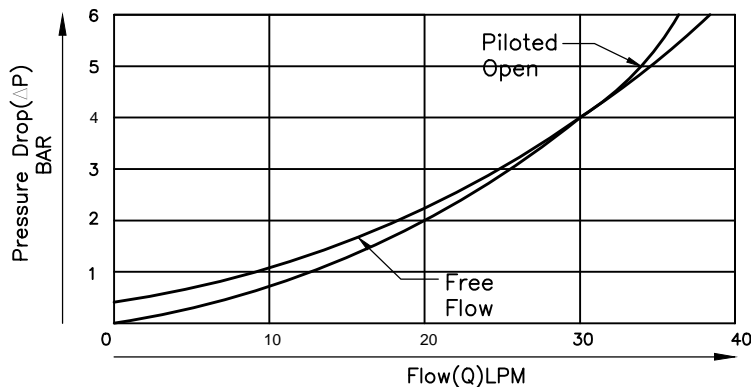
Specifications

| | |
|------------------|---------|
| Maximum Flow | 35 LPM |
| Maximum Pressure | 245 Bar |
| Pilot Ratio | 1:4 |

General Description

The DPC Series, Dual Pilot Operated Check Valves positively lock an actuator in position on both the ends and do not allow movement until the actuators are powered into motion.

Performance Curve



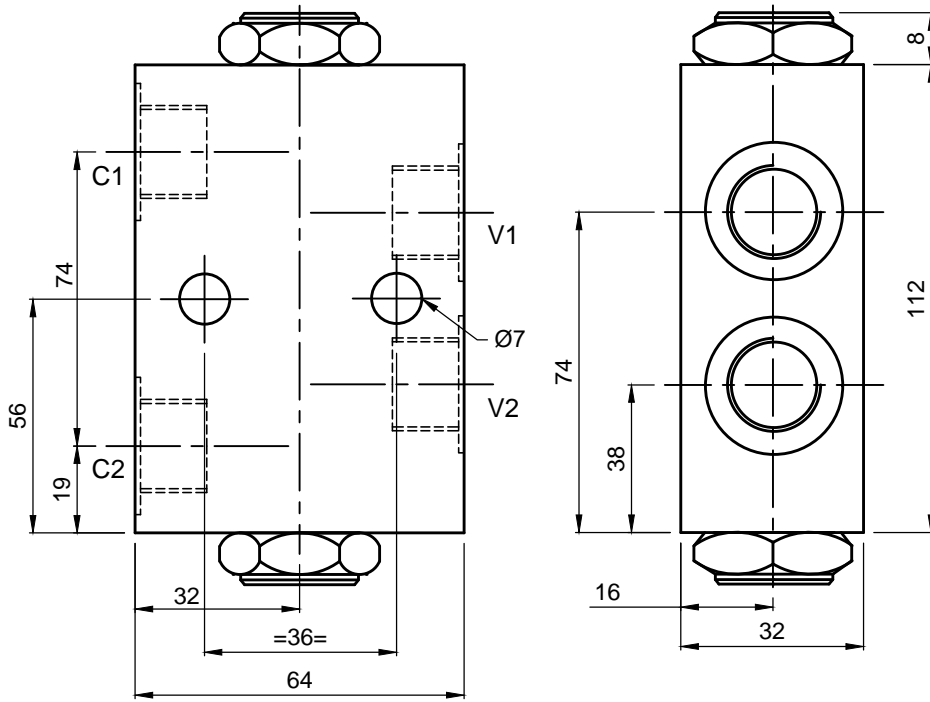
| YY | Craking Press.(Bar) |
|----|---------------------|
| 14 | 1.4 |
| 45 | 4.5 |

| ZZ | PORTS |
|----|-----------------|
| 38 | 3/8" BSP (STD.) |
| 12 | 1/2" BSP |

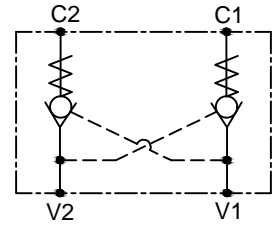


DUAL PILOT OPERATED CHECK VALVE

DPC 03-IL-YY-ZZ



Cartridge With Body



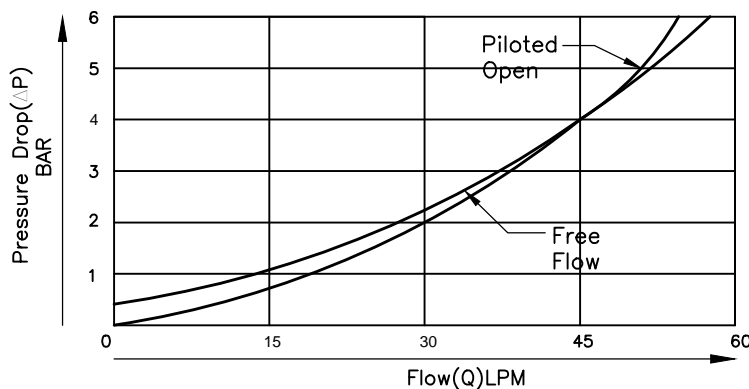
Specifications

| | |
|------------------|---------|
| Maximum Flow | 60 LPM |
| Maximum Pressure | 245 Bar |
| Pilot Ratio | 1:4 |

General Description

The DPC Series, Dual Pilot Operated Check Valves positively lock an actuator in position on both the ends and do not allow movement until the actuators are powered into motion.

Performance Curve



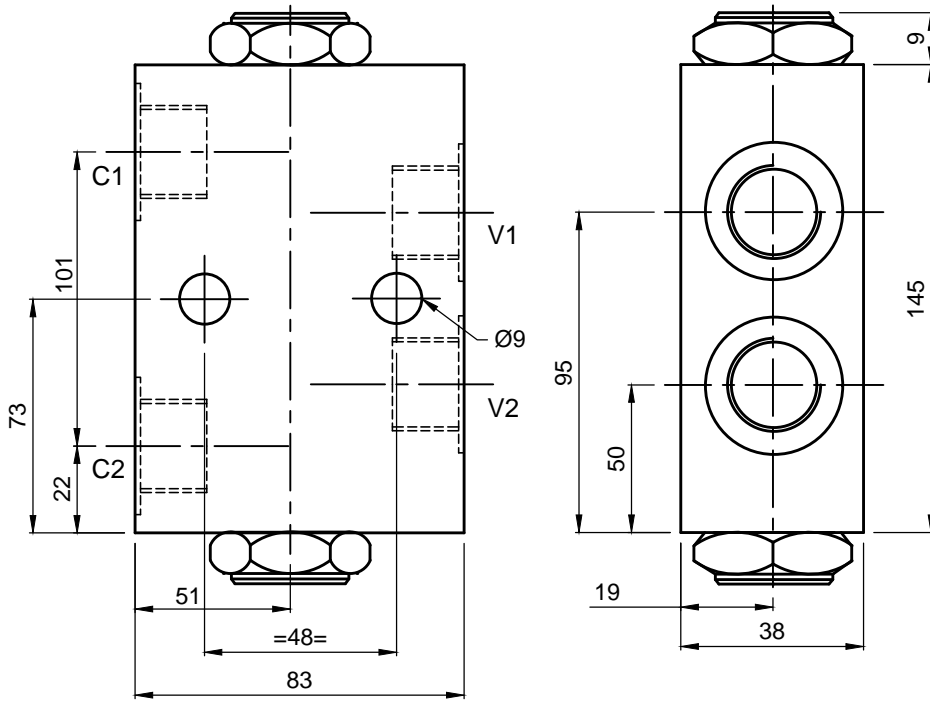
| YY | Craking Press.(Bar) |
|----|---------------------|
| 14 | 1.4 |
| 45 | 4.5 |

| ZZ | PORTS |
|----|-----------------|
| 12 | 1/2" BSP (STD.) |
| 38 | 3/8" BSP |

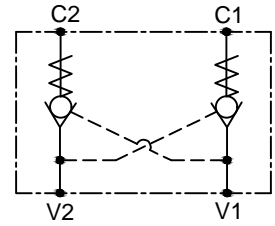


DUAL PILOT OPERATED CHECK VALVE

DPC 04-IL-YY-ZZ



Cartridge With Body



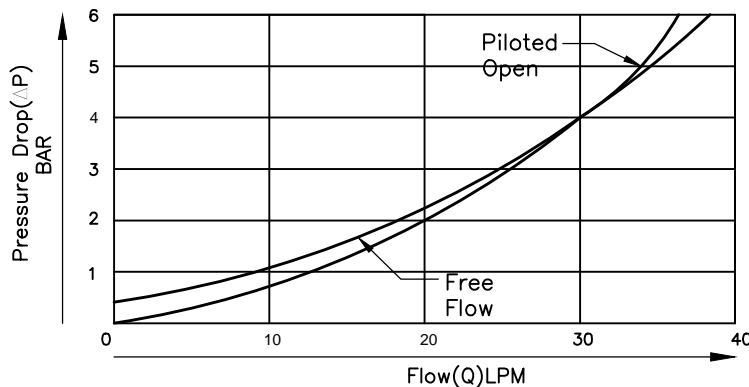
Specifications

| | |
|------------------|---------|
| Maximum Flow | 120 LPM |
| Maximum Pressure | 245 Bar |
| Pilot Ratio | 1:4 |

General Description

The DPC Series, Dual Pilot Operated Check Valves positively lock an actuator in position on both the ends and do not allow movement until the actuators are powered into motion.

Performance Curve



| YY | Craking Press.(Bar) |
|----|---------------------|
| 14 | 1.4 |
| 45 | 4.5 |

| ZZ | PORTS |
|----|----------------|
| 34 | 3/4" BSP(STD.) |
| 10 | 1" |