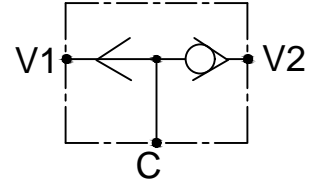
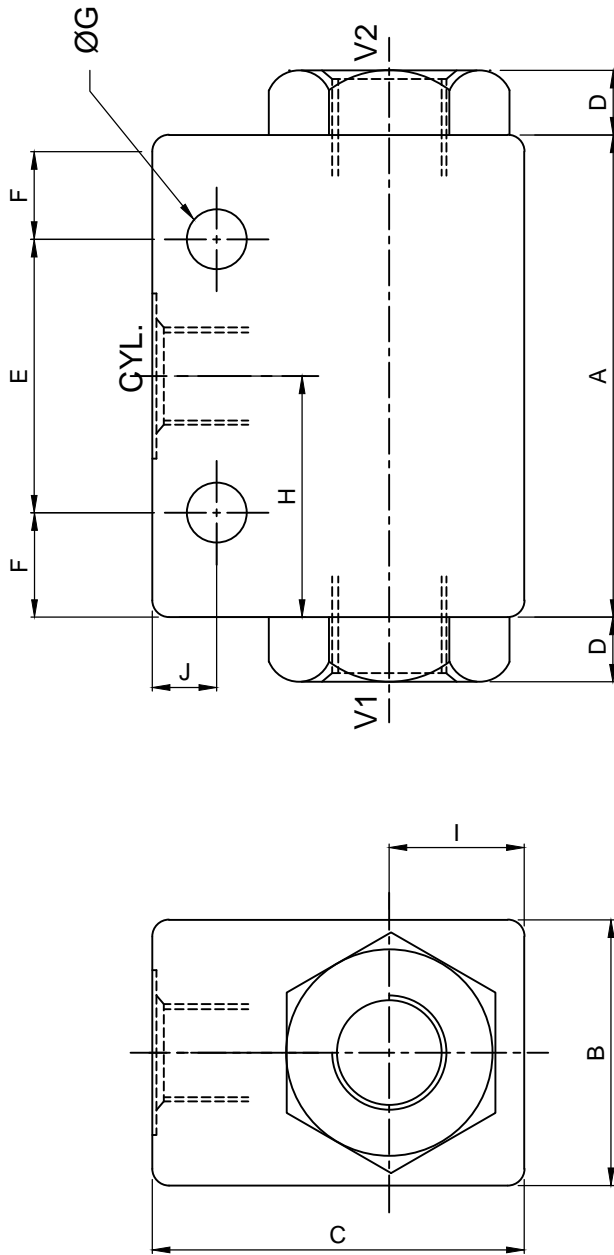




SHUTTLE VALVES

SC XX-IL-ZZ



Specifications

Maximum Pressure	245 Bar
------------------	---------

General Description

The SC Series, Shuttle Valves divert the flow from the higher pressure of two lines to a third line. These are typically used in load sensing and hydraulic brake release applications. These provide pressure to outlet port regardless of which actuator port is energised.

ZZ	PORTS
38	3/8" BSP
34	3/4" BSP

DIMENSIONAL CHART :

SIZE XX	V1 , V2	CYL	A	B	C	D	E	F	G	H	I	J	RATED FLOW (LPM)
02	3/8" BSP	3/8" BSP	65	35	50	10	45	10	Ø8	32.5	22	08	25
03	3/4" BSP	3/4" BSP	93	48	70	8.5	75	10	Ø10	46.5	22	08	75