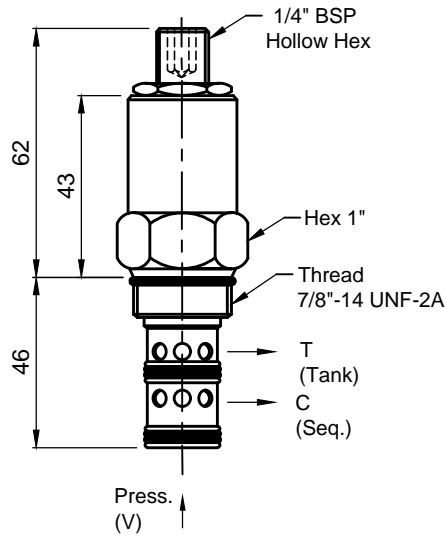


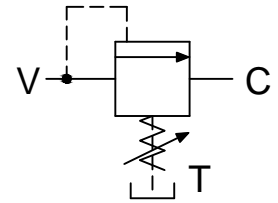


SEQUENCE VALVE

SQ 03-XX-YY-ZZ



Cartridge

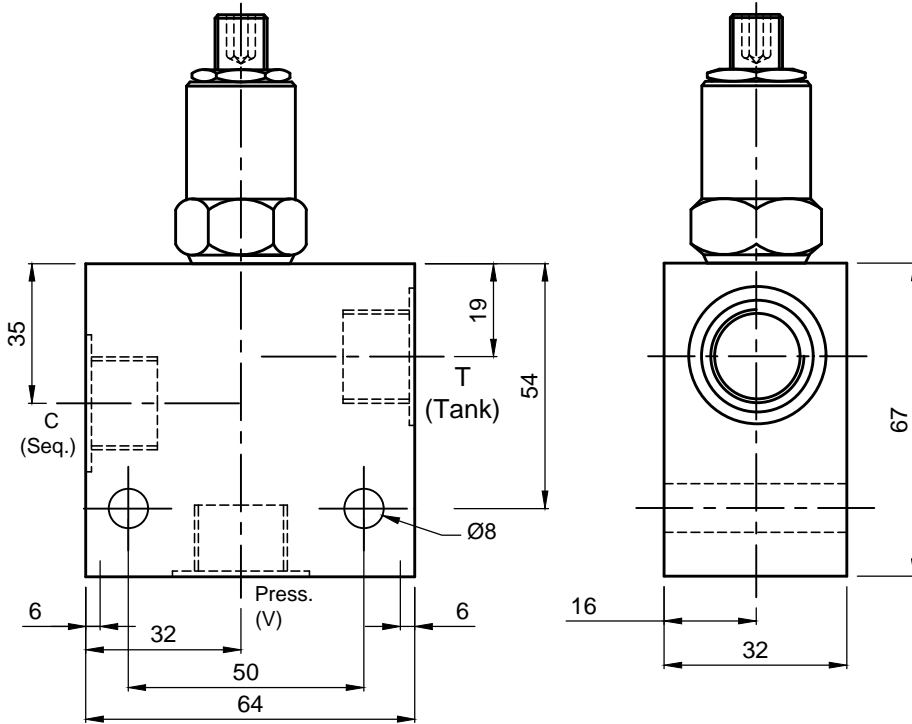


Specifications

Maximum Flow	60 LPM
Maximum Setting Pressure	245 Bar
Reseat Pressure	80% of crack pressure
Cavity	C10-3

General Description

The SQ Series, Sequence Valves are used when there is need to provide priority or sequenced series of operations, when either the end of stroke position or a certain pressure is reached in hydraulic circuit. These are also used as relief valves in circuits when restrictions in the down stream line would cause high back pressure .



Cartridge With Body

XX	Mounting Style
00	Cartridge
IL	Inline

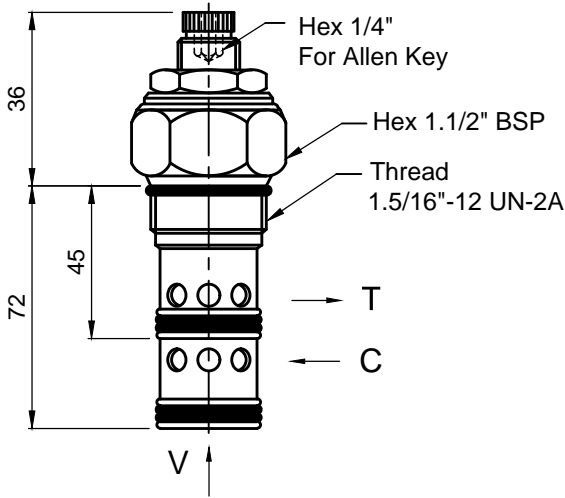
YY	Press.Range(Bar)
10	10 - 105
20	20-170
30	30 - 245

ZZ	PORTS
00	Cartridge
38	3/8" BSP
12	1/2" BSP (STD.)

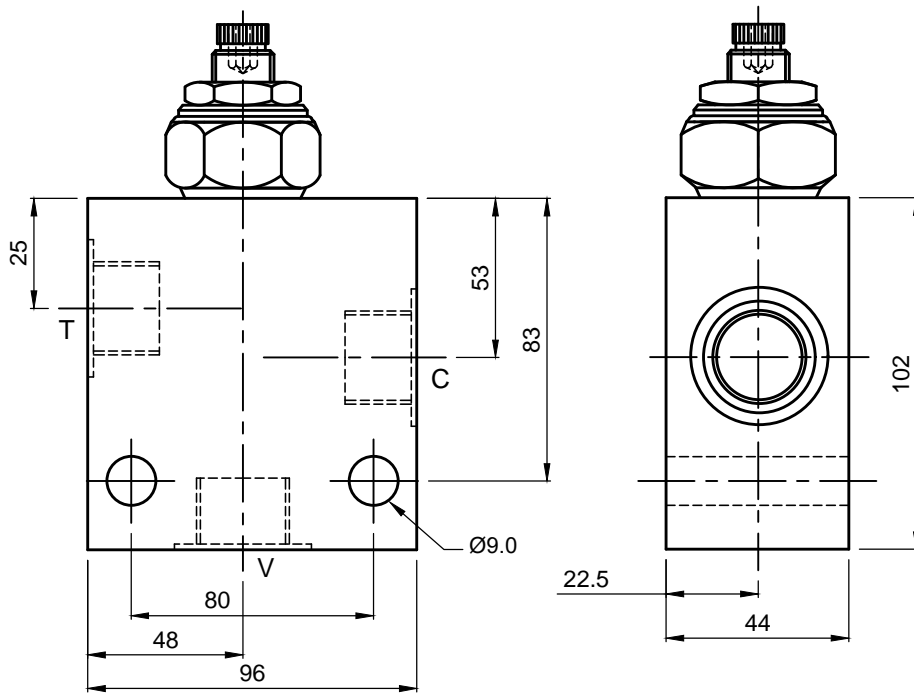


SEQUENCE VALVE

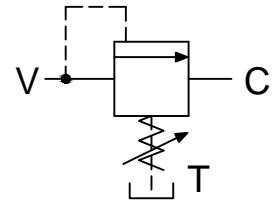
SQ 04-XX-YY-ZZ



Cartridge



Cartridge With Body



Specifications

Maximum Flow	150 LPM
Maximum Setting Pressure	245 Bar
Reseat Pressure	80% of crack pressure
Cavity	C16-3

General Description

The SQ Series, Sequence Valves are used when there is need to provide priority or sequenced series of operations, when either the end of stroke position or a certain pressure is reached in hydraulic circuit. These are also used as relief valves in circuits when restrictions in the down stream line would cause high back pressure.

XX	Mounting Style
00	Cartridge
IL	Inline

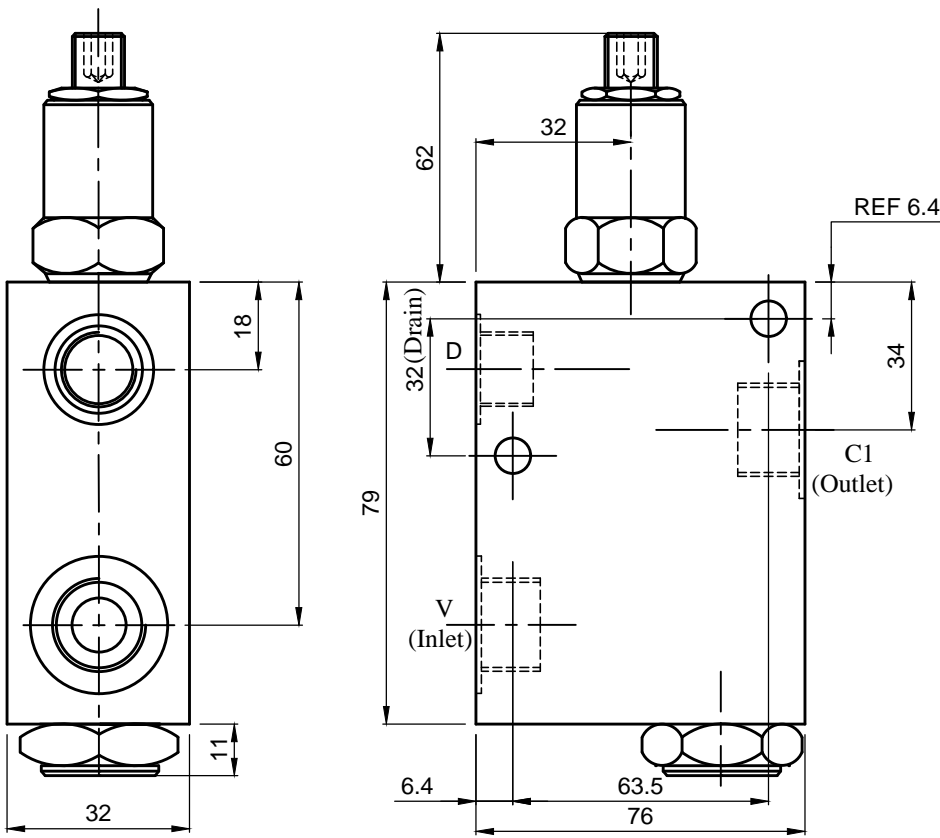
YY	Press.Setting(Bar)
10	10 - 105
20	20-170
30	30 - 245

ZZ	PORTS
00	Cartridge
34	3/4" BSP (STD.)
10	1"

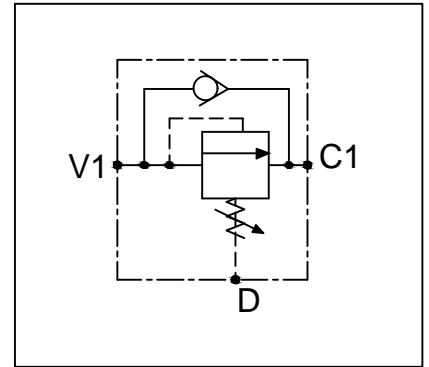


SEQUENCE VALVE WITH REVERSE FREE FLOW CHECK

SQC 03-IL-YY-ZZ



Cartridge With Body



Specifications

Maximum Flow	60 LPM
Maximum Setting Pressure	245 Bar
Reseat Pressure	80% of crack pressure
Cavity	C10-3

General Description

The SQC Series, Sequence Valve With reverse free flow check valves are used to control the sequence of operation of two or more hydraulic actuators by assuring priority hydraulic pressure to one actuator before another. Reverse free flow occurs through check valve.

XX	Mounting Style
00	Cartridge
IL	Inline

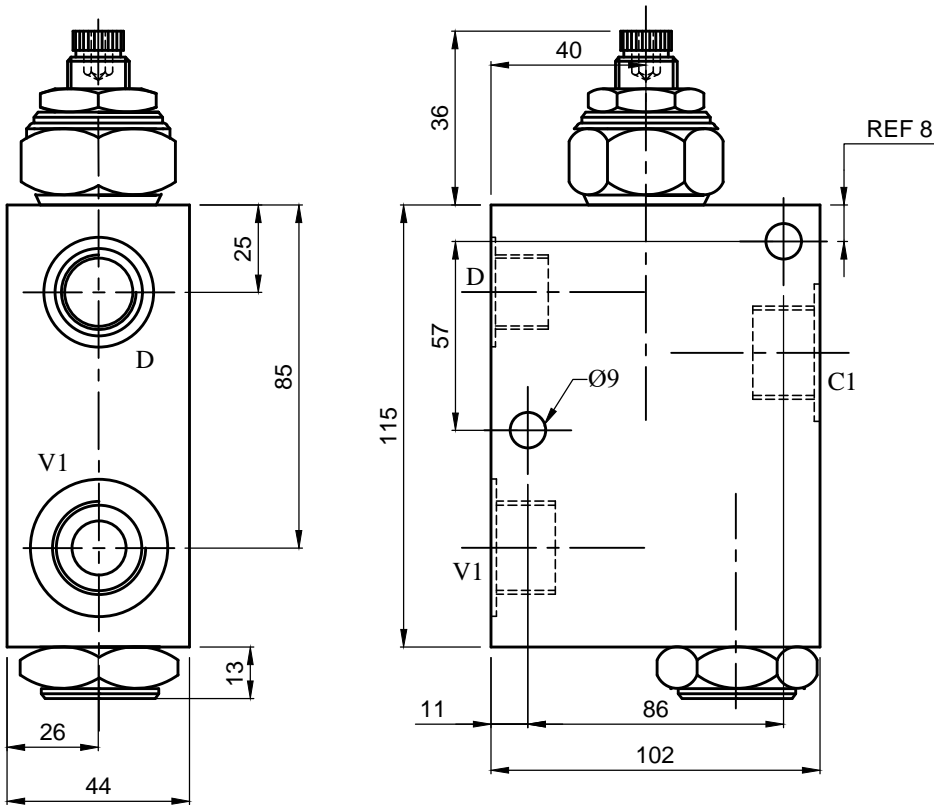
YY	Press.Range(Bar)
10	10 - 105
20	20-170
30	30 - 245

ZZ	PORTS
00	Cartridge
38	3/8" BSP
12	1/2" BSP (STD.)

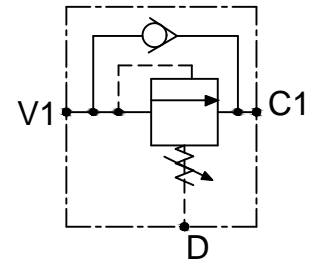


SEQUENCE VALVE WITH REVERSE FREE FLOW CHECK

SQC 04-IL-YY-ZZ



Cartridge With Body



Specifications

Maximum Flow	120 LPM
Maximum Setting Pressure	245 Bar
Reseat Pressure	80% of crack pressure
Cavity	C16-3

General Description

The SQC Series, Sequence Valve With reverse free flow check valves are used to control the sequence of operation of two or more hydraulic actuators by assuring priority hydraulic pressure to one actuator before another. Reverse free flow occurs through check valve.

XX	Mounting Style
00	Cartridge
IL	Inline

YY	Press.Setting(Bar)
10	10 - 105
20	20-170
30	30 - 245

ZZ	PORTS
00	Cartridge
34	3/4" BSP (STD.)
10	1" BSP