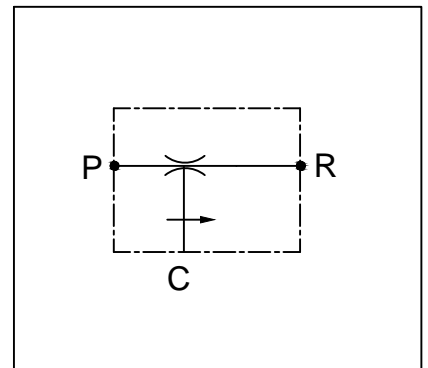
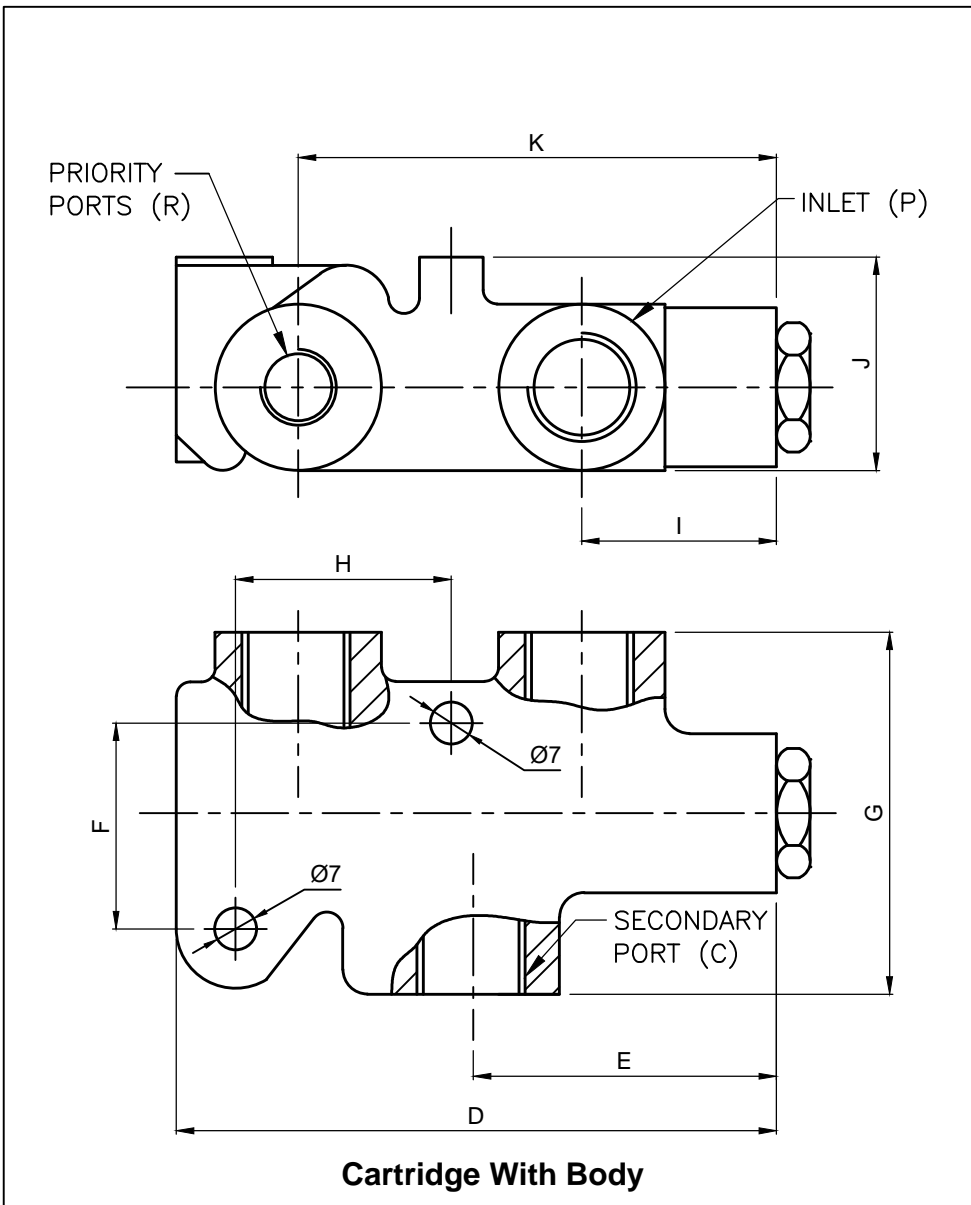




PRIORITY VALVE (FIXED SETTING)

PFV-XX-IL-ZZ



Specifications

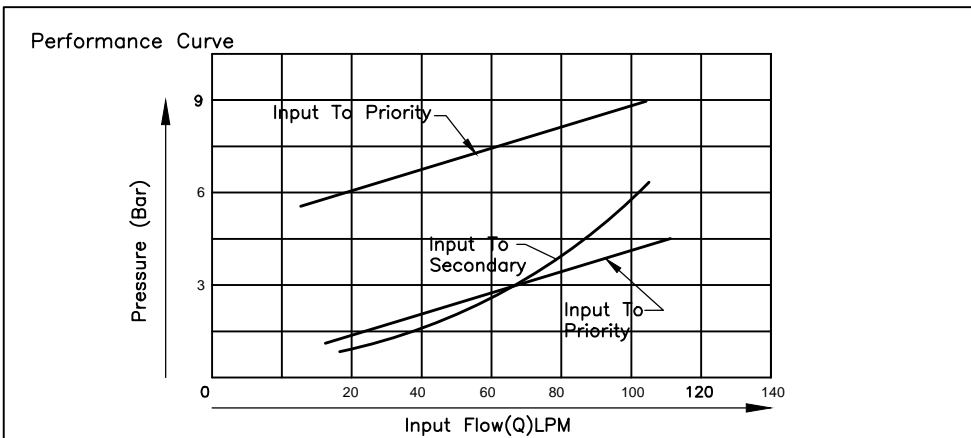
Maximum operating Pressure	210 Bar
Priority Flow	4 to 34 LPM in increment of 3.8 LPM factory set.

General Description

**The PFV Series, Priority Flow Control Valves** are designed to supply two circuits with single pump. These valves establish priority circuit (R) and bypass the excess flow to Secondary circuit (C) only after priority circuit is satisfied.

The relief valve also can be provided to protect priority flow circuit against over load.

SIZE XX	P	R	C	D	E	F	G	H	I	J	K	RATED FLOW (LPM)
03	1/2" BSP	3/8" BSP	1/2" BSP	120	58	51	82	47	34	47	96	76
05	1" BSP	3/4" BSP	1" BSP	157	73	59	95	59	46	41	124	150



ZZ	Press.Rang (Bar)
00	W/O Relief
30	5 to 210 bar