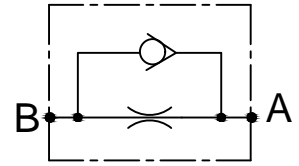
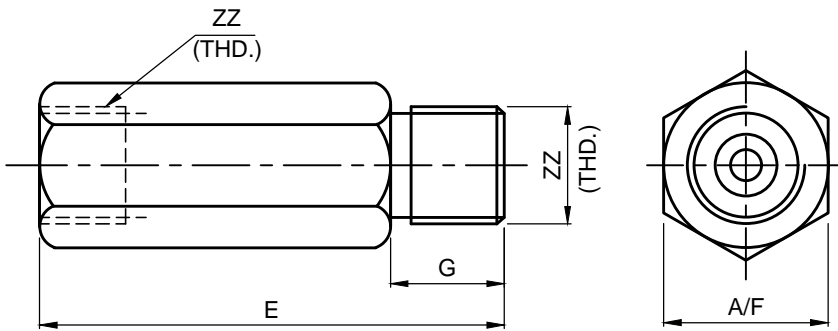




FIXED SPEED CYL. LOWERING VALVE

FRV YY-ZZ



Specifications

Max. Working Press.	245 Bar
Mounting	No Restriction

General Description

The FRV Series, Fixed Cylinder Lowering Valve Can Be Used As flow Restriction, Limitation, Division, Combination, etc. They Are Pressure Compensated And They Prevent The oil Flow From Exceeding A PReseat Value, Independently From The Working Pressure. They Can Incorporate a Check Valve For Free Flow In The Opposite Direction.

Table For Body

PORT/ SIZE	E	A/F	G
01	52.0	19.0	10.5
02	80.0	22.0	12.0
03	100.0	27.0	14.0

ZZ	PORTS
14	1/4" BSP
38	3/8" BSP
12	1/2" BSP

YY	Orifice Size
01	1 mm
16	1.6 mm
02	2.0 mm
25	2.5 mm