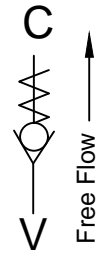
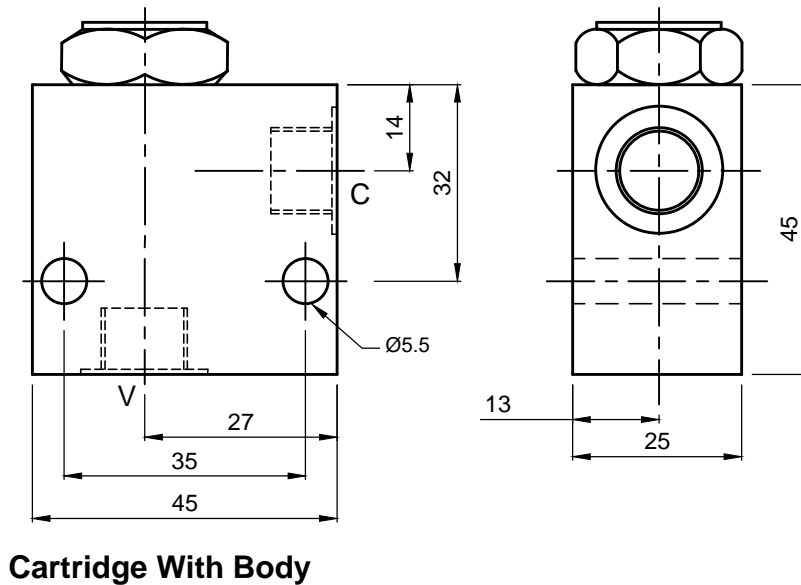
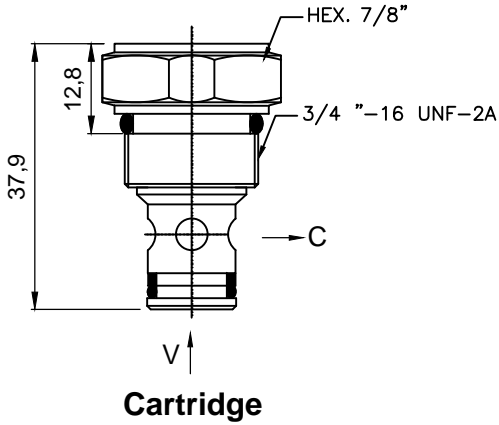




CHECK VALVES

CV 02-XX-YY-ZZ



Specifications

| | |
|------------------|---------|
| Max. Rated Flow | 40 LPM |
| Maximum Pressure | 245 Bar |
| Cavity | C08-2 |

General Description

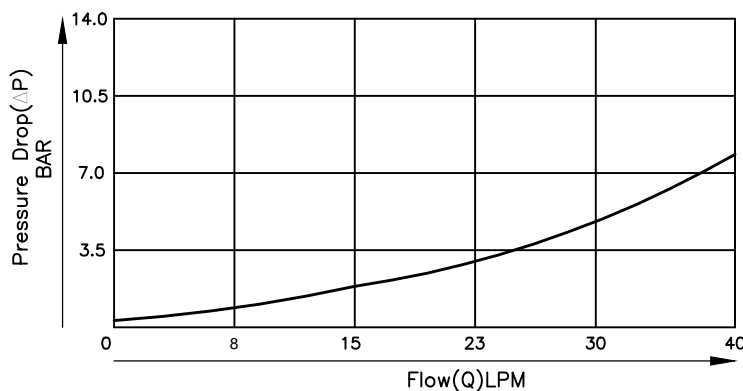
The CV02 Series, Check Valves allow free flow in one direction while preventing flow in the reverse direction. These can be used to isolate portions of a hydraulic circuit or to provide a free flow path around restrictive valve.

| | |
|-----------|-----------------------|
| XX | Mounting Style |
| 00 | Cartridge |
| IL | Inline |

| | |
|-----------|----------------------------|
| YY | Craking Press.(Bar) |
| 02 | 0.2 |
| 14 | 1.4 |
| 45 | 4.5 |

| | |
|-----------|-----------------|
| ZZ | PORTS |
| 00 | Cartridge |
| 38 | 3/8" BSP (STD.) |
| 12 | 1/2" BSP |

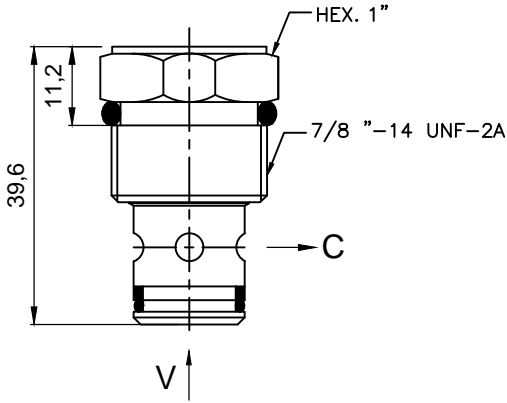
Performance Curve



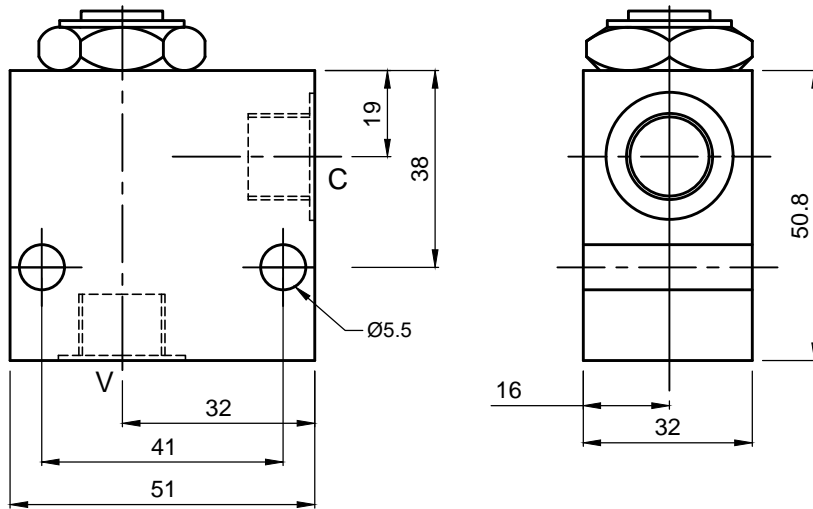


CHECK VALVES

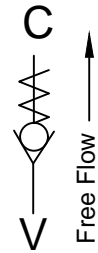
CV 03-XX-YY-ZZ



Cartridge



Cartridge With Body



Specifications

| | |
|------------------------|---------|
| Max. Rated Flow | 60 LPM |
| Maximum Inlet Pressure | 245 Bar |
| Cavity | C10-2 |

General Description

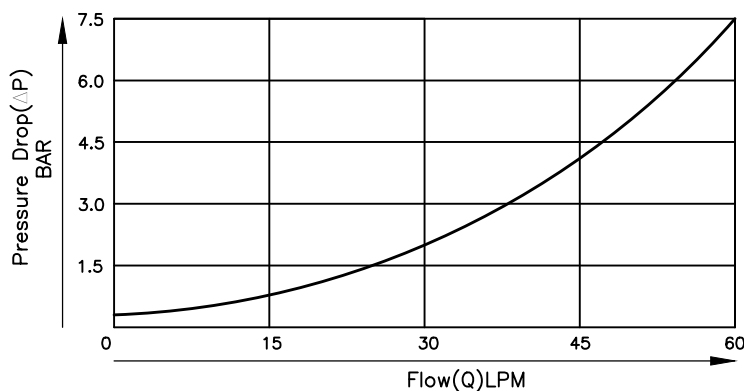
The CV03 Series, Check Valves allow free flow in one direction while preventing flow in the reverse direction. These can be used to isolate portions of a hydraulic circuit or to provide a free flow path around restrictive valve.

| | |
|-----------|-----------------------|
| XX | Mounting Style |
| 00 | Cartridge |
| IL | Inline |

| | |
|-----------|----------------------------|
| YY | Craking Press.(Bar) |
| 02 | 0.2 |
| 14 | 1.4 |
| 45 | 4.5 |

| | |
|-----------|--------------|
| ZZ | PORTS |
| 00 | Cartridge |
| 12 | 1/2" BSP |

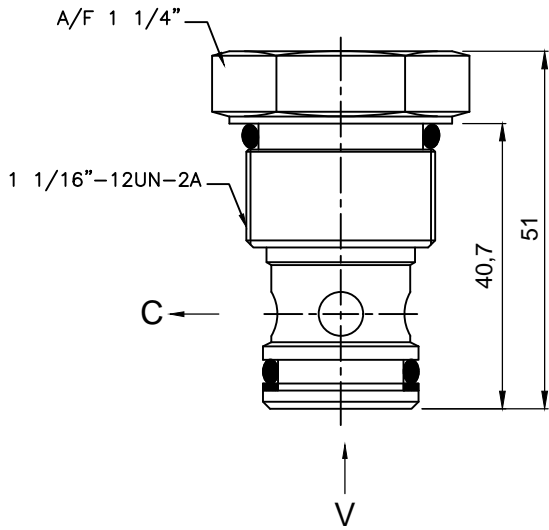
Performance Curve



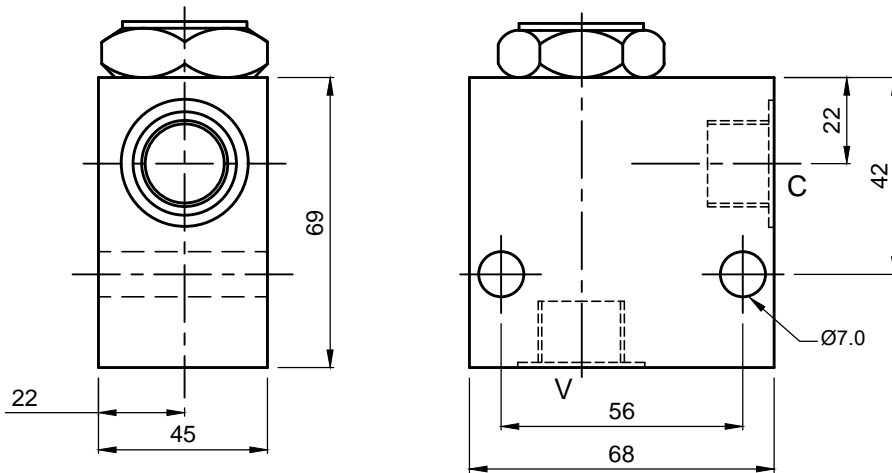


CHECK VALVES

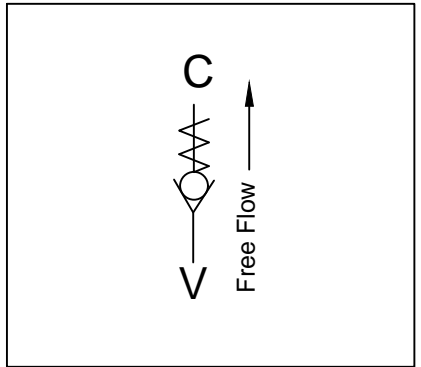
CV 04-XX-YY-ZZ



Cartridge



Cartridge With Body



Specifications

| | |
|------------------------|---------|
| Max. Rated Flow | 120 LPM |
| Maximum Inlet Pressure | 245 Bar |
| Cavity | C12-2 |

General Description

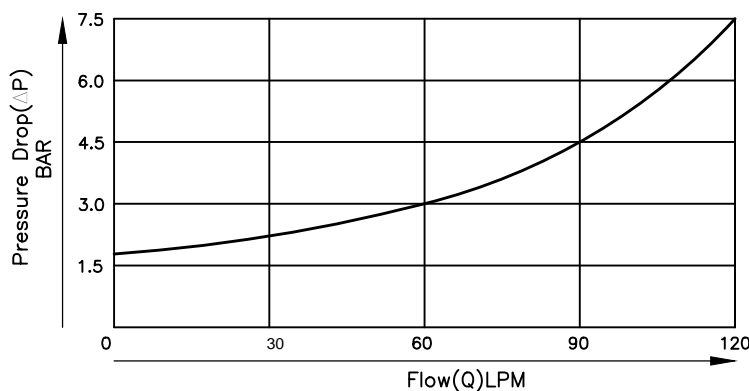
The CV04 Series, Check Valves allow free flow in one direction while preventing flow in the reverse direction. These can be used to isolate portions of a hydraulic circuit or to provide a free flow path around restrictive valve.

| | |
|-----------|-----------------------|
| XX | Mounting Style |
| 00 | Cartridge |
| IL | Inline |

| | |
|-----------|----------------------------|
| YY | Craking Press.(Bar) |
| 02 | 0.2 |
| 14 | 1.4 |
| 45 | 4.5 |

| | |
|-----------|----------------|
| ZZ | PORTS |
| 00 | Cartridge |
| 34 | 3/4" BSP(STD.) |
| 10 | 1" |

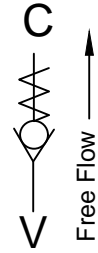
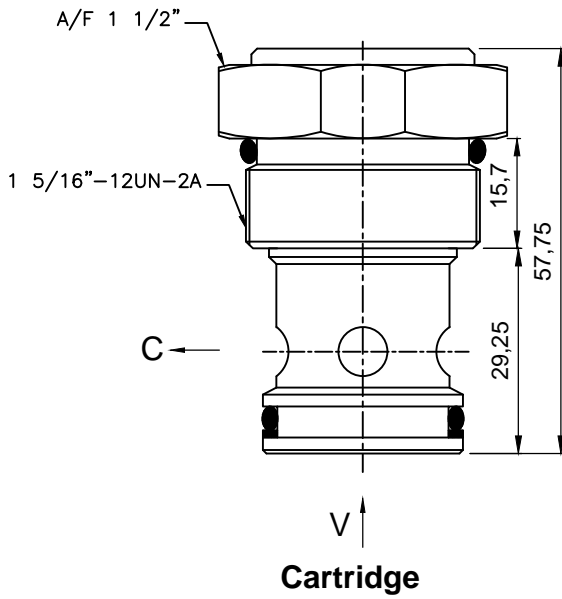
Performance Curve





CHECK VALVES

CV 05-XX-YY-ZZ

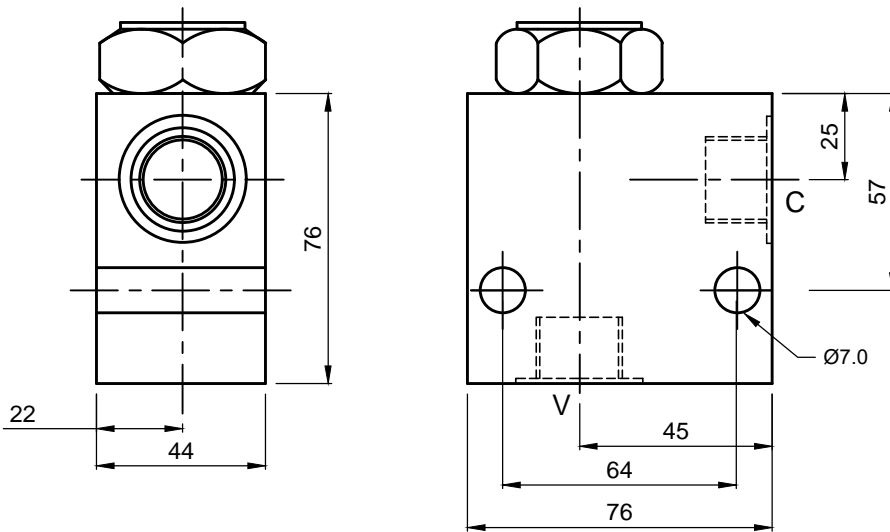


Specifications

| | |
|------------------------|---------|
| Max. Rated Flow | 200 LPM |
| Maximum Inlet Pressure | 245 Bar |
| Cavity | C16-2 |

General Description

The CV05 Series, Check Valves allow free flow in one direction while preventing flow in the reverse direction. These can be used to isolate portions of a hydraulic circuit or to provide a free flow path around restrictive valve.



Cartridge With Body

| | |
|-----------|-----------------------|
| XX | Mounting Style |
| 00 | Cartridge |
| IL | Inline |

| | |
|-----------|----------------------------|
| YY | Craking Press.(Bar) |
| 02 | 0.2 |
| 14 | 1.4 |
| 45 | 4.5 |

| | |
|-----------|--------------|
| ZZ | PORTS |
| 00 | Cartridge |
| 34 | 3/4" BSP |
| 10 | 1" (STD.) |

Performance Curve

