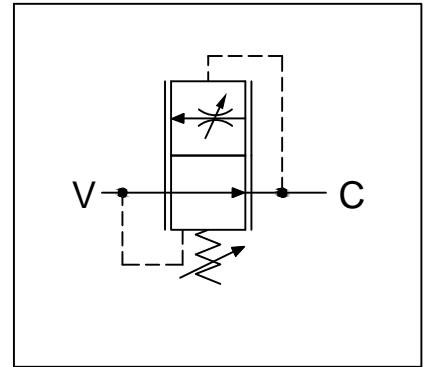
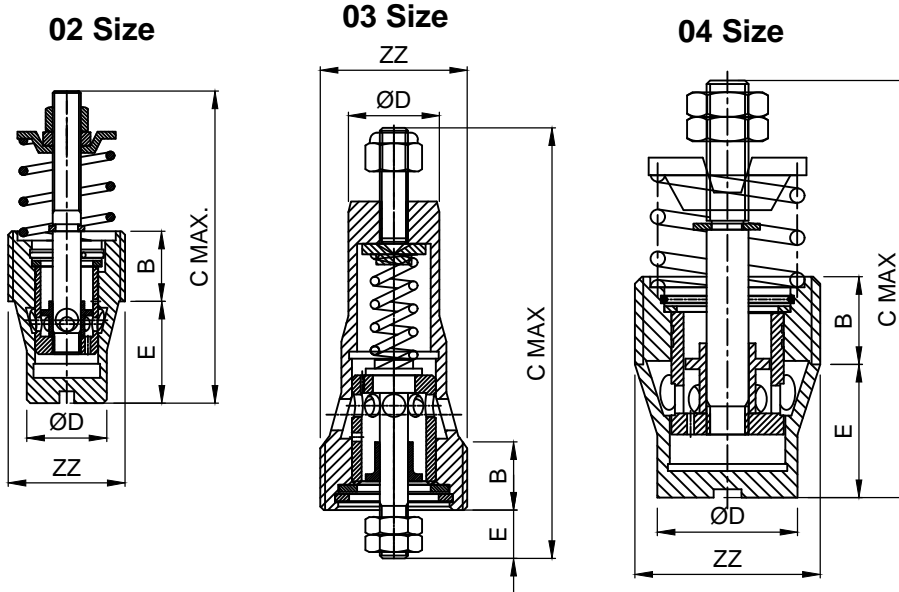




VARIABLE SPEED CYL. LOWERING VALVE OR  
DROP RATE BRAKE VALVE

CLV XX-YY

**\*\* CARTRIDGE ONLY**



Specifications

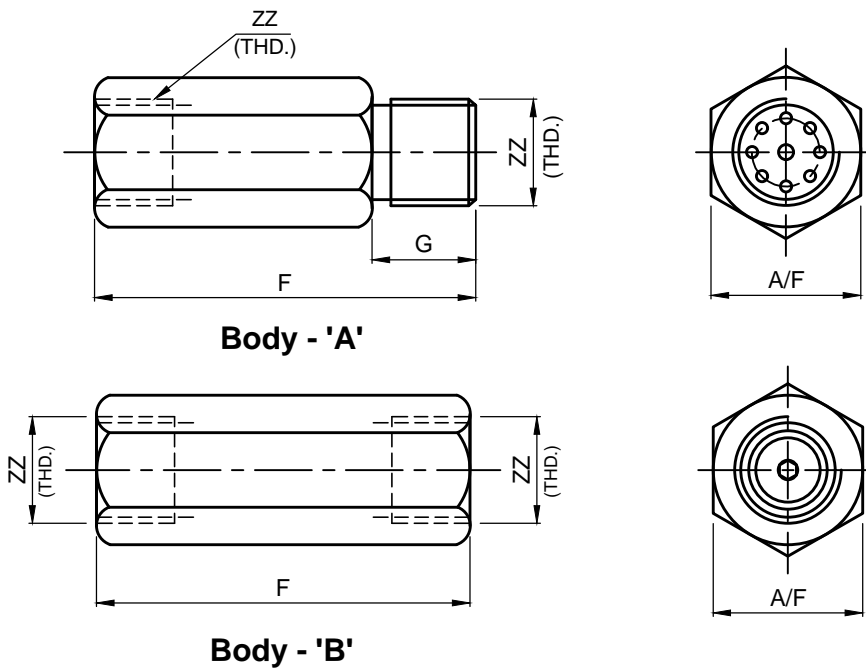
Max. Working Press.	245 Bar
Mounting	No Restriction

General Description

**The CLV Series, Cylinder Lowering Valves** can be used as drop rate braking valve for lowering single acting cylinders at a constant lowering rate, largely irrespective of the size of the load. The valve allows free flow of oil to cylinder while oil flow from the cylinder is controlled to give constant lowering speed. Typical example of application is fork lift.

The valve is preset to required lowering rate (flow rate) before installation. The flow can be set within prescribed range by adjusting 'S'.

**\*\* CARTRIDGE WITH BODY**



XX	Flow Set
02	25 LPM
03	60 LPM
04	125 LPM

YY	Mounting Style
00	Cartridge
IL	Inline

Table For Cartridge

SIZE	B	C MAX.	ØD	E
02	10.0	44.5	11.4	14.5
03	9.5	61.4	13.0	6.9
04	12.5	59.5	20.0	19.0

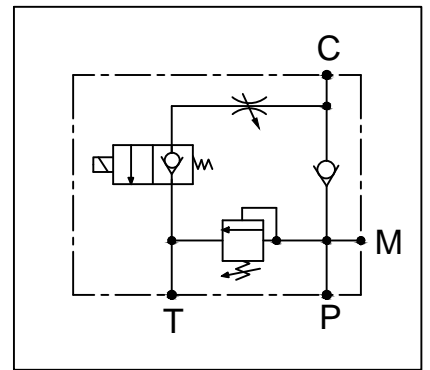
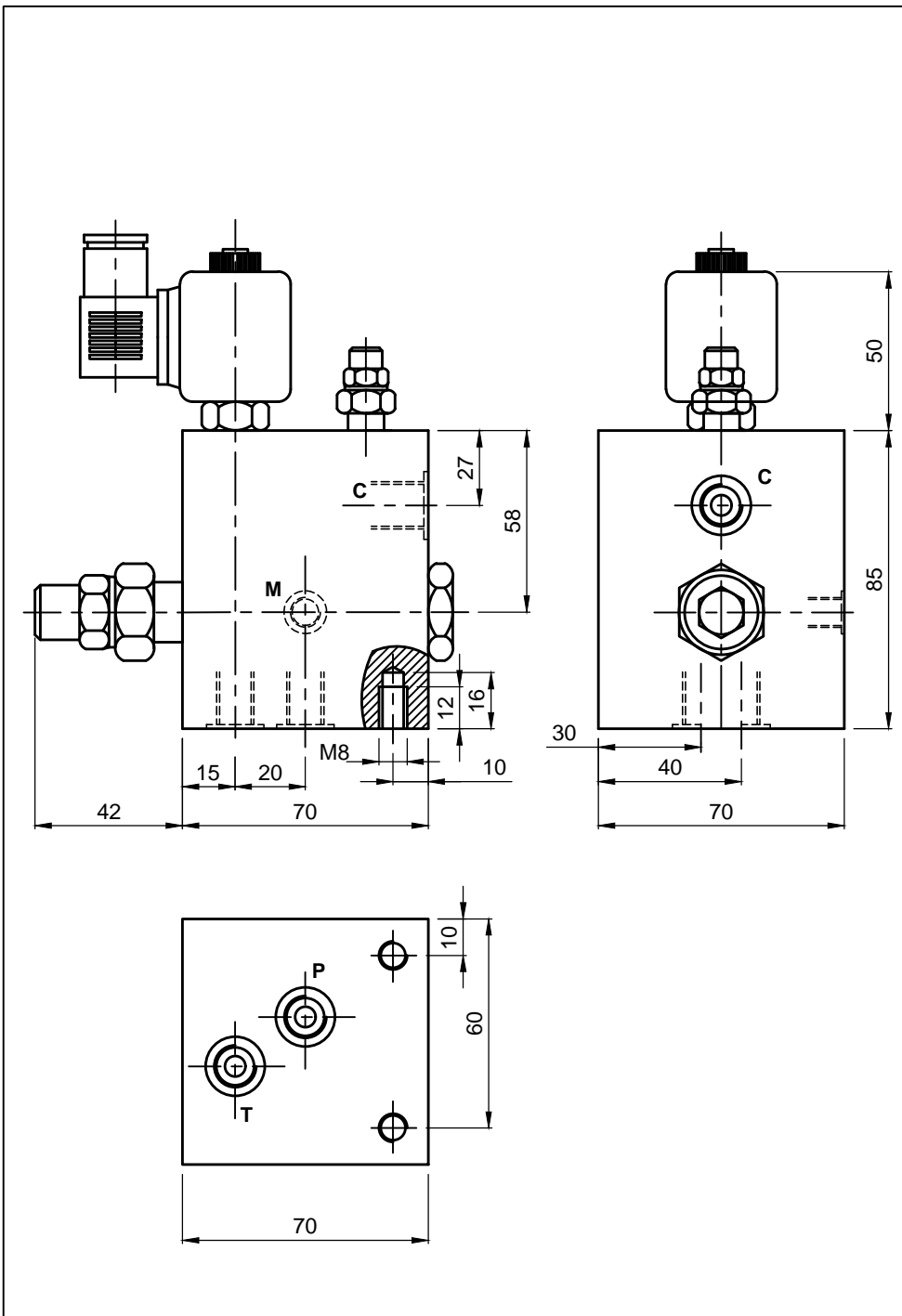
Table For Body

F	A/F	G	ZZ BSP
80.0	22.0	12.0	3/8"
100.0	27.0	14.0	1/2"
105.0	36.0	16.0	3/4"



CYLINDER LOWERING BLOCK WITH CHECK AND NEEDLE

CLB-CV-NV-IL



Specifications

Maximum Flow	25 LPM
Maximum setting Pressure	245 Bar

General Description

The CLB Series, Cylinder Lowering Block consists of relief, check and needle cartridges and a two way normally closed or normally open solenoid block can be used in a circuit which require relief protection and a solenoid feature for unloading and dumping system flow to tank.

YY	Flow Range(LPM)
01	1 - 4
02	3 - 10
03	6 - 25

ZZ	PORTS
38	3/8" BSP (C,T,P)
14	1/4" BSP (M)

Performance Curve

